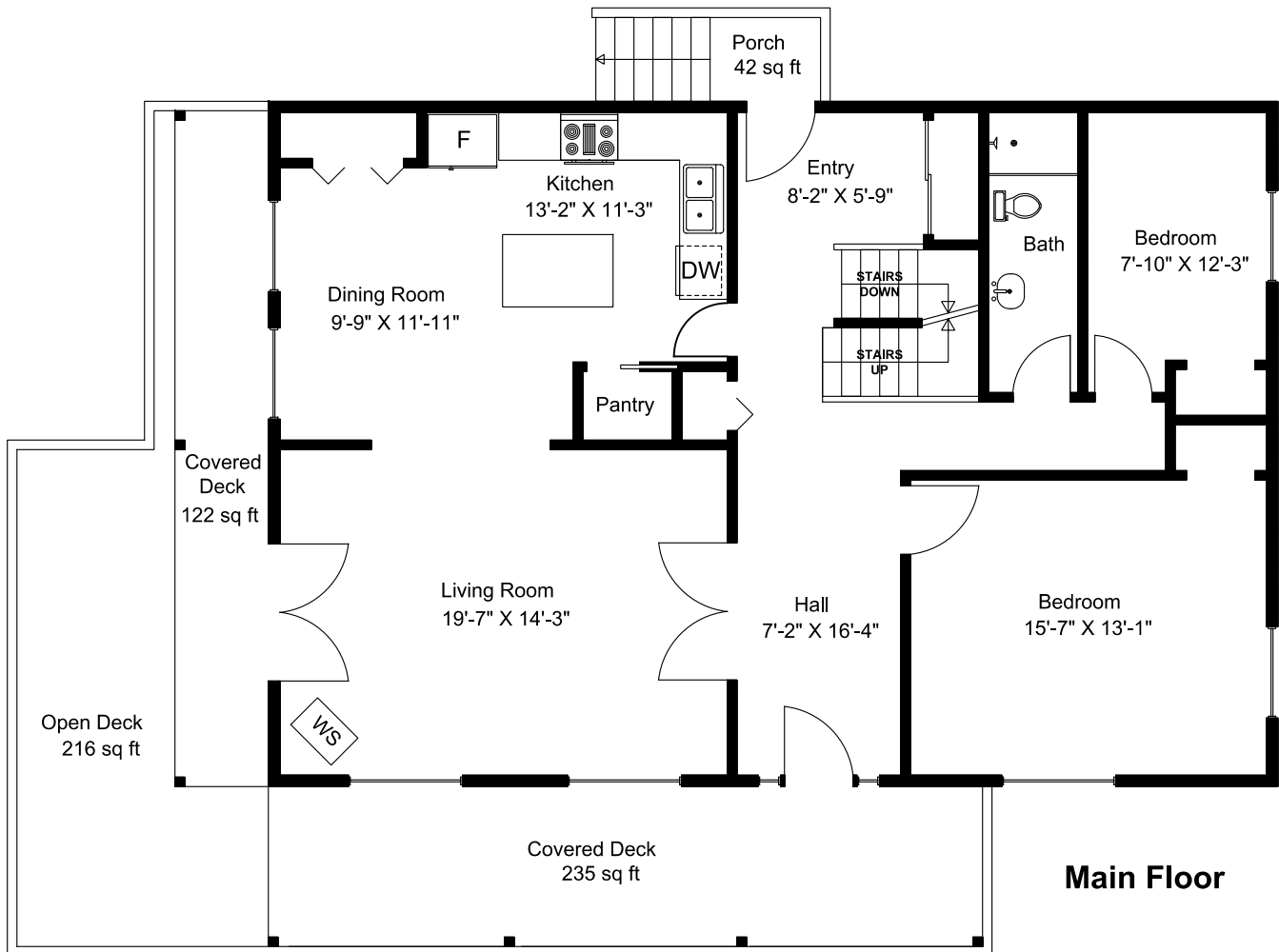


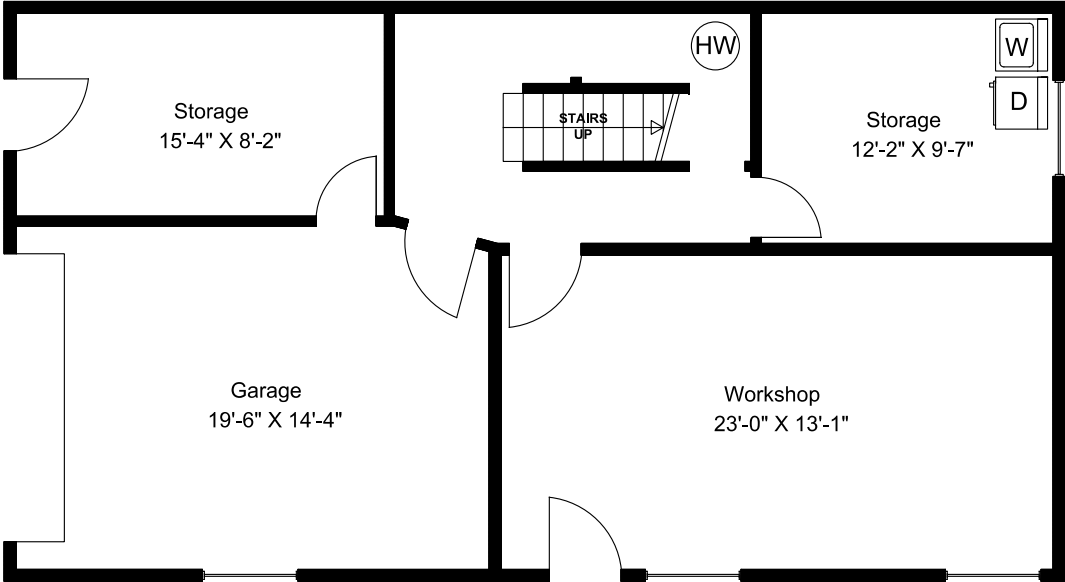
# 1973 Harlequin Crescent



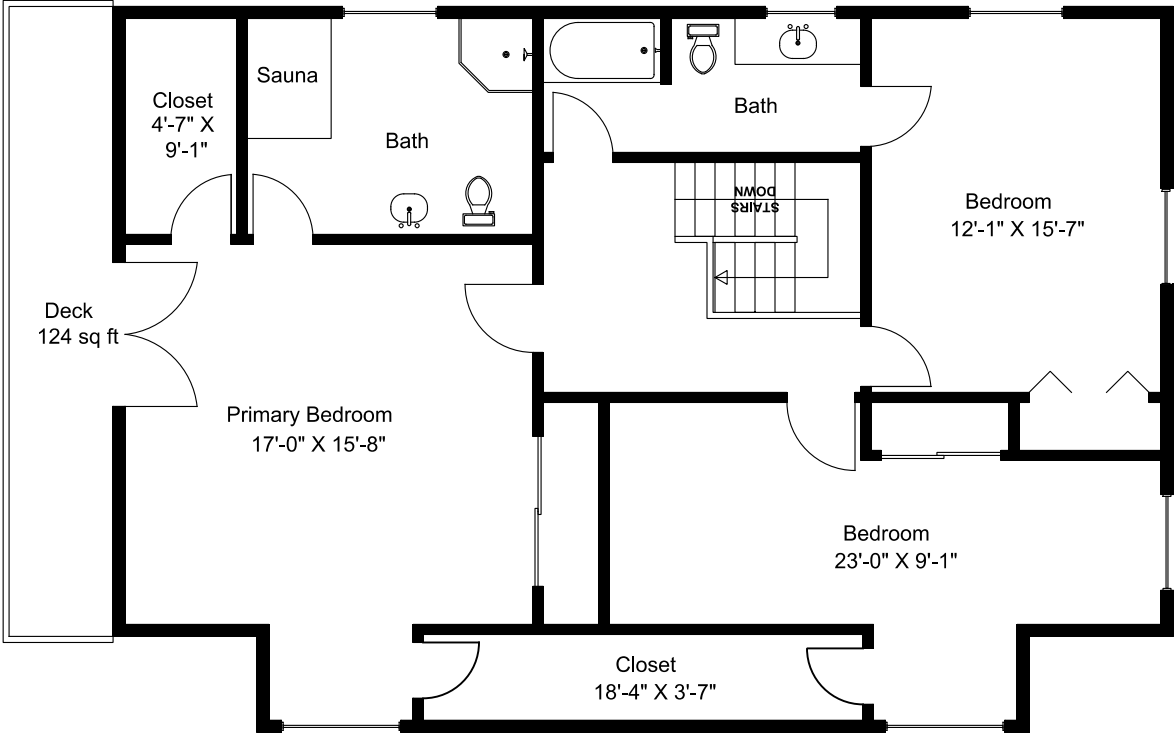
**Main Floor = 1325 sq ft**  
**Upper Floor = 1288 sq ft**  
**Lower Floor = 771 sq ft**  
**Total Area = 3384 sq ft**  
**Garage = 297 sq ft**  
**Decks&Porch = 739 sq ft**

Prepared for the Exclusive use of  
Susan Forrest  
Royal LePage - Parkville  
as measured on May 6, 2026

# 1973 Harlequin Crescent



Lower Floor



Upper Floor