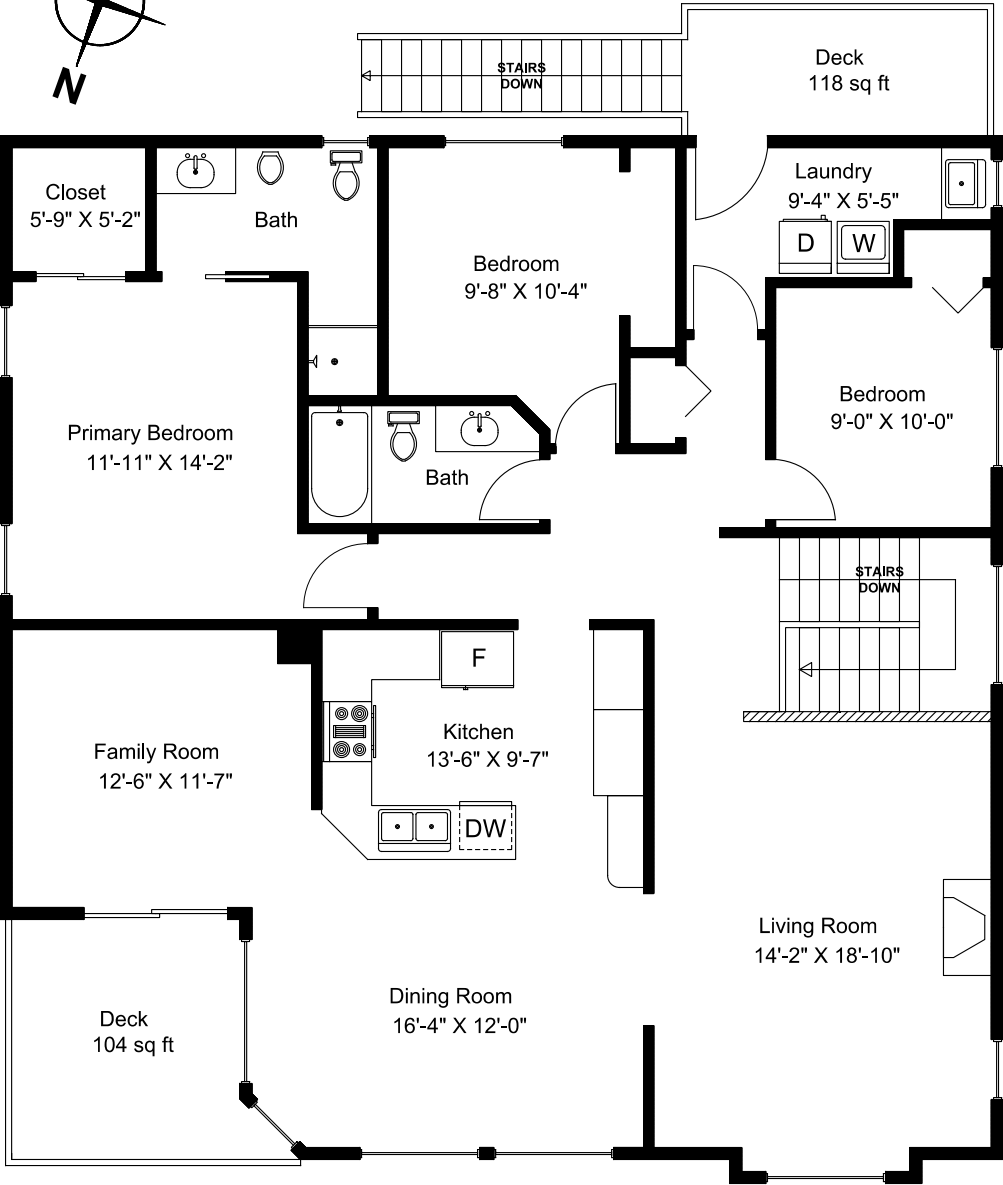
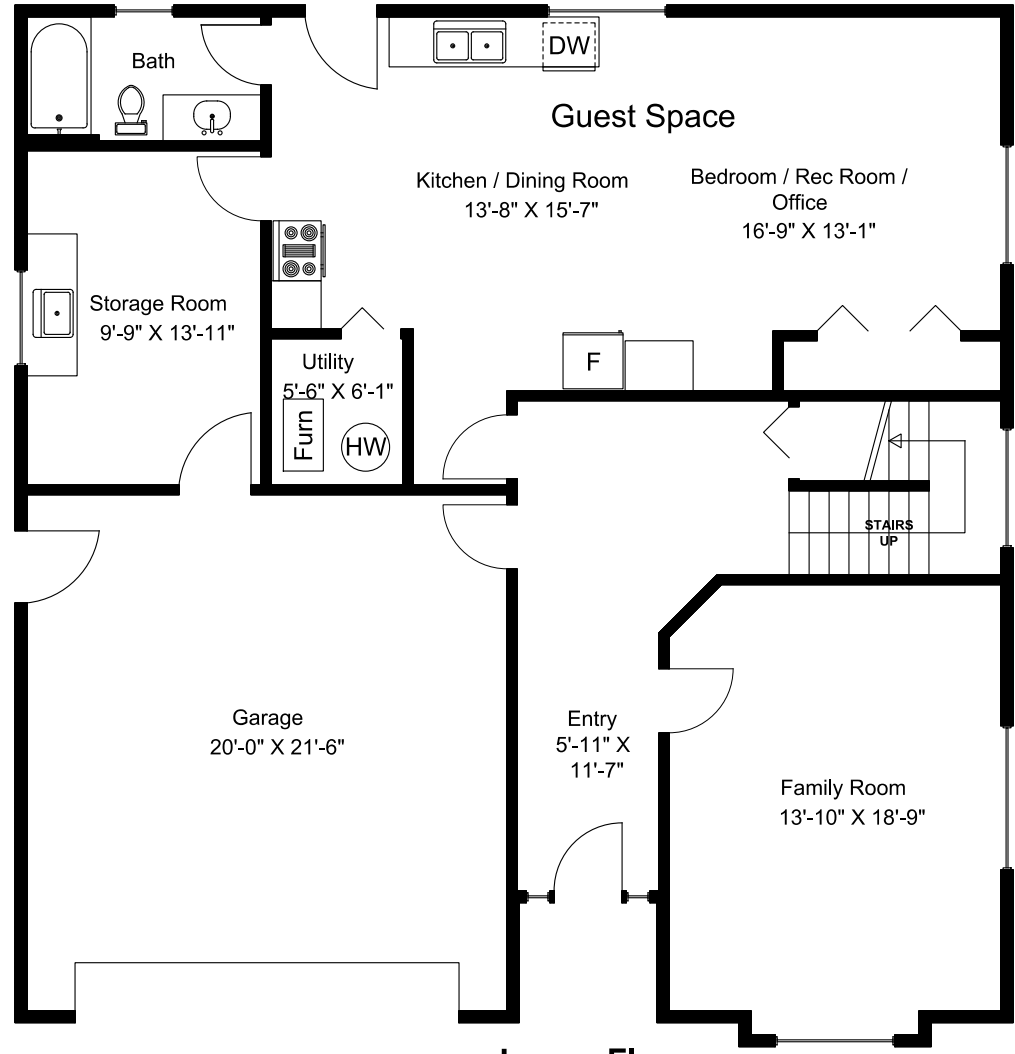


846 Wright Road



Main Floor



Lower Floor

Main Floor = 1690 sq ft
Lower Floor = 1290 sq ft
Total Area = 2980 sq ft
Garage = 454 sq ft
Decks = 222 sq ft

Dimensions as shown are approximate and should be verified

Prepared for the Exclusive use of
 Susan Forrest
 Royal LePage - Parkville
 as measured on April 8, 2026