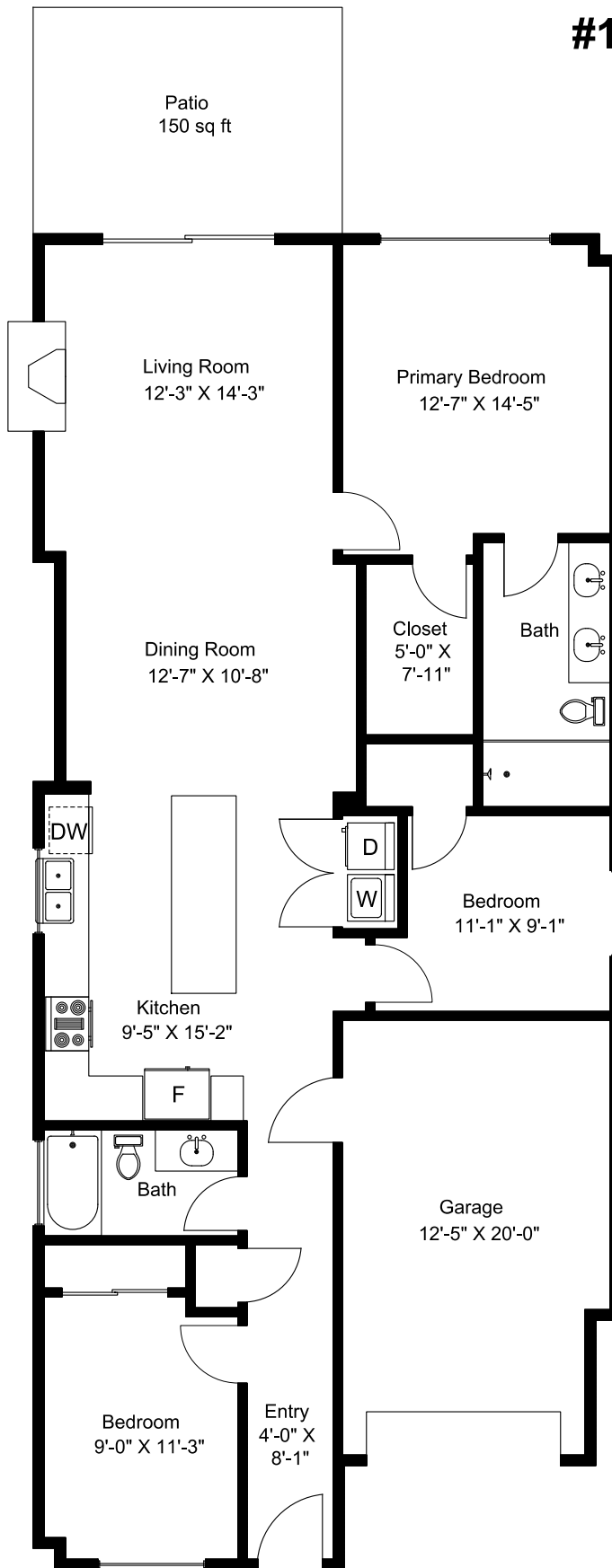


# #14 - 846 Ackerman Road



**Main Floor = 1354 sq ft**

**Garage = 260 sq ft**

**Patio = 150 sq ft**

Dimensions as shown are approximate and should be verified

Prepared for the Exclusive use of  
Susan Forrest  
Royal LePage - Parkville  
as measured on April 21, 2026