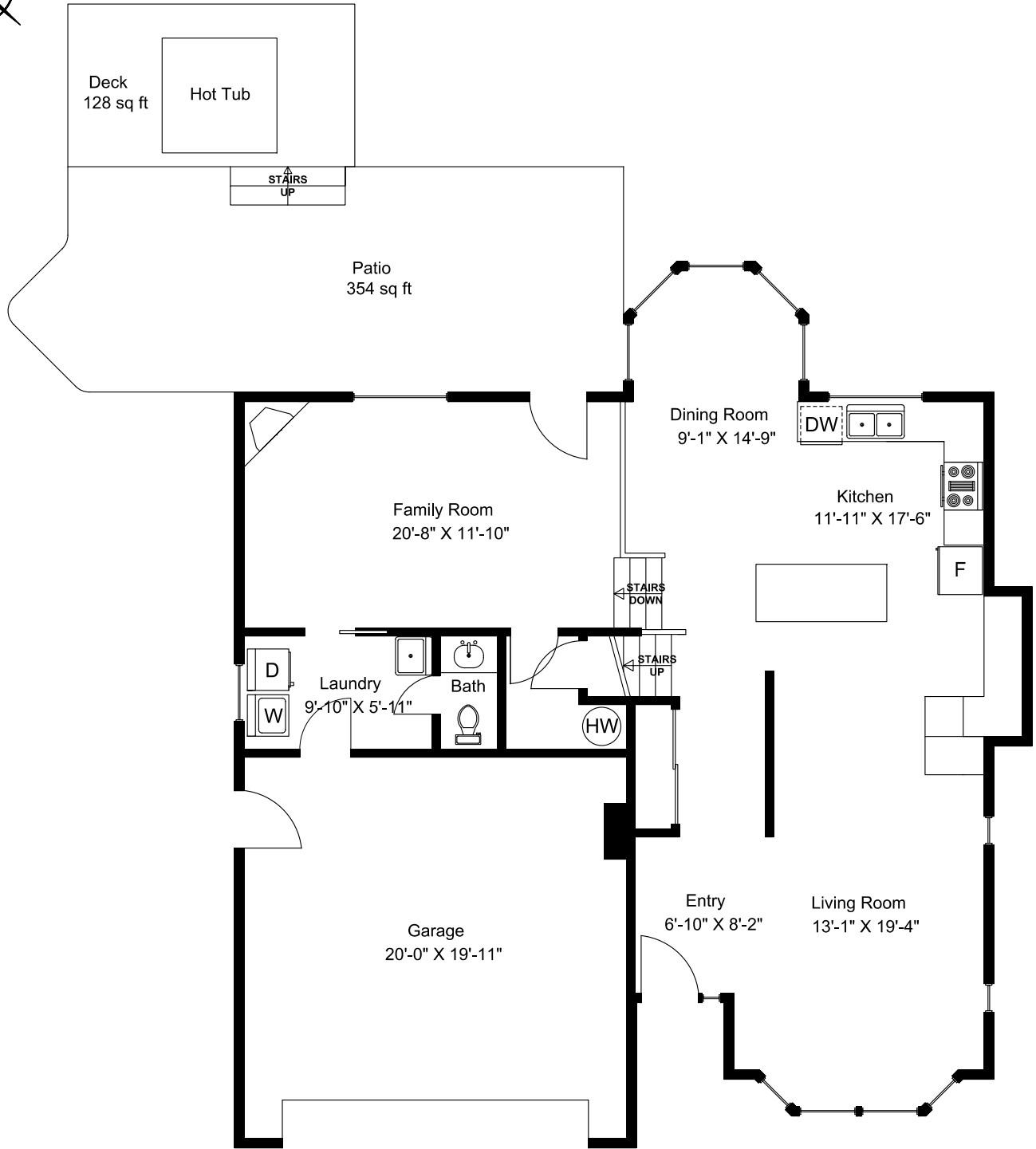
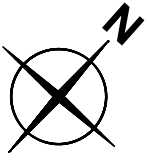


834 Woodside Crescent



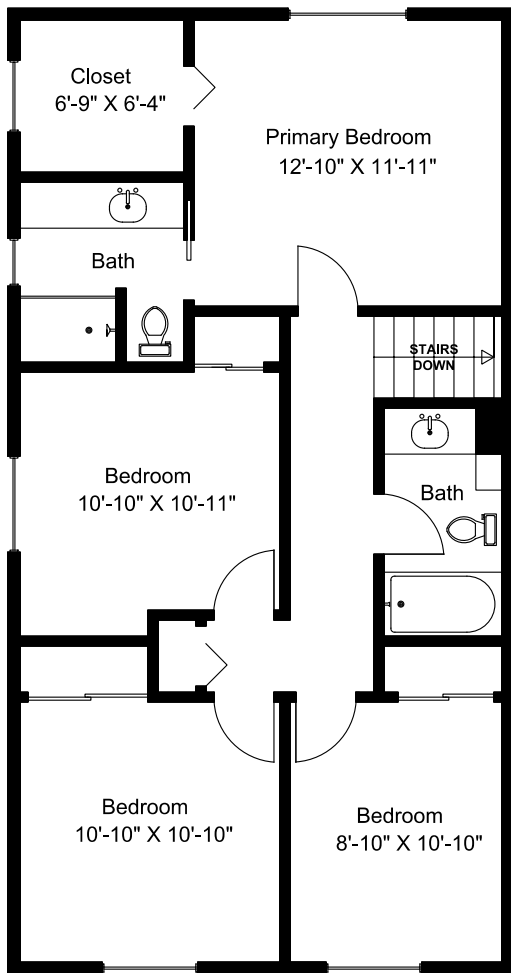
Main Floor

Main Floor = 1164 sq ft
Upper Floor = 860 sq ft
Total Area = 2024 sq ft
Garage = 422 sq ft
Deck&Patio = 482 sq ft
Shop = 322 sq ft
Shed = 52 sq ft

Dimensions as shown are approximate and should be verified

Prepared for the Exclusive use of
 Susan Forrest
 Royal LePage - Parkville
 as measured on April 14, 2026

834 Woodside Crescent



Upper Floor

