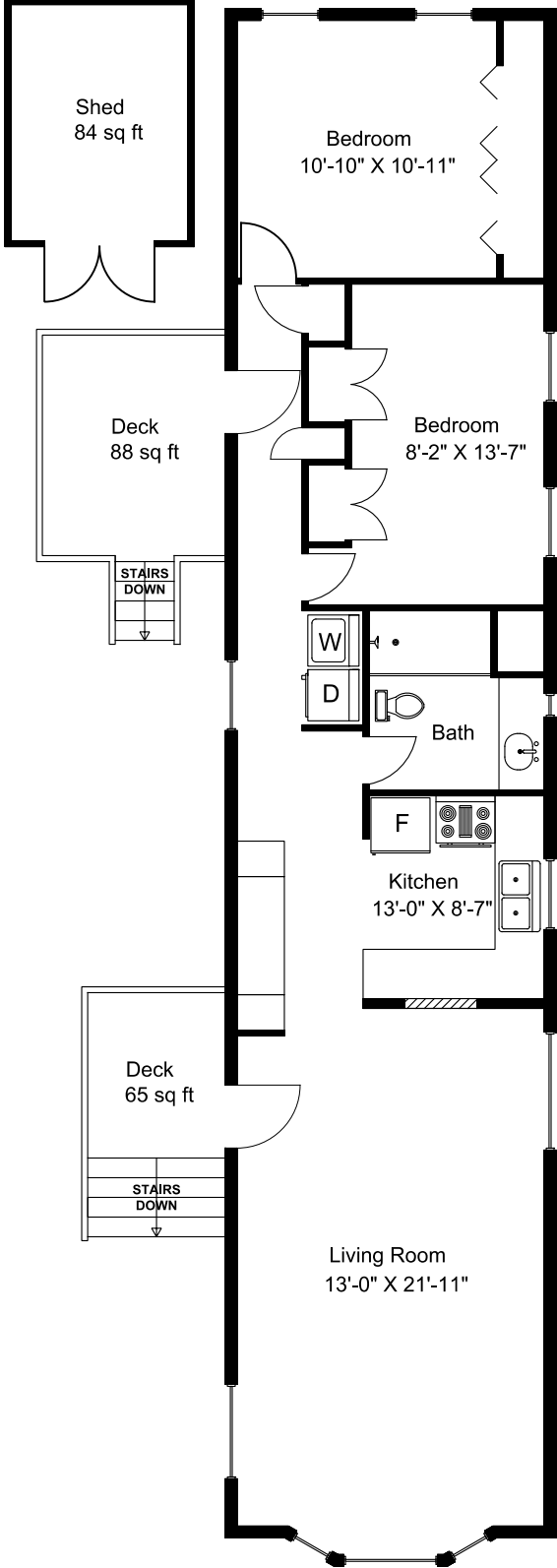
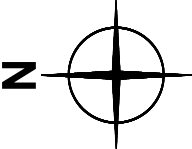


# #11 - 150 Corfield Street N



**Main Floor = 915 sq ft**  
**Decks = 153 sq ft**  
**Shed = 84 sq ft**

Dimensions as shown are approximate and should be verified

Prepared for the Exclusive use of  
Susan Forrest  
Royal LePage - Parksville  
as measured on March 26, 2026