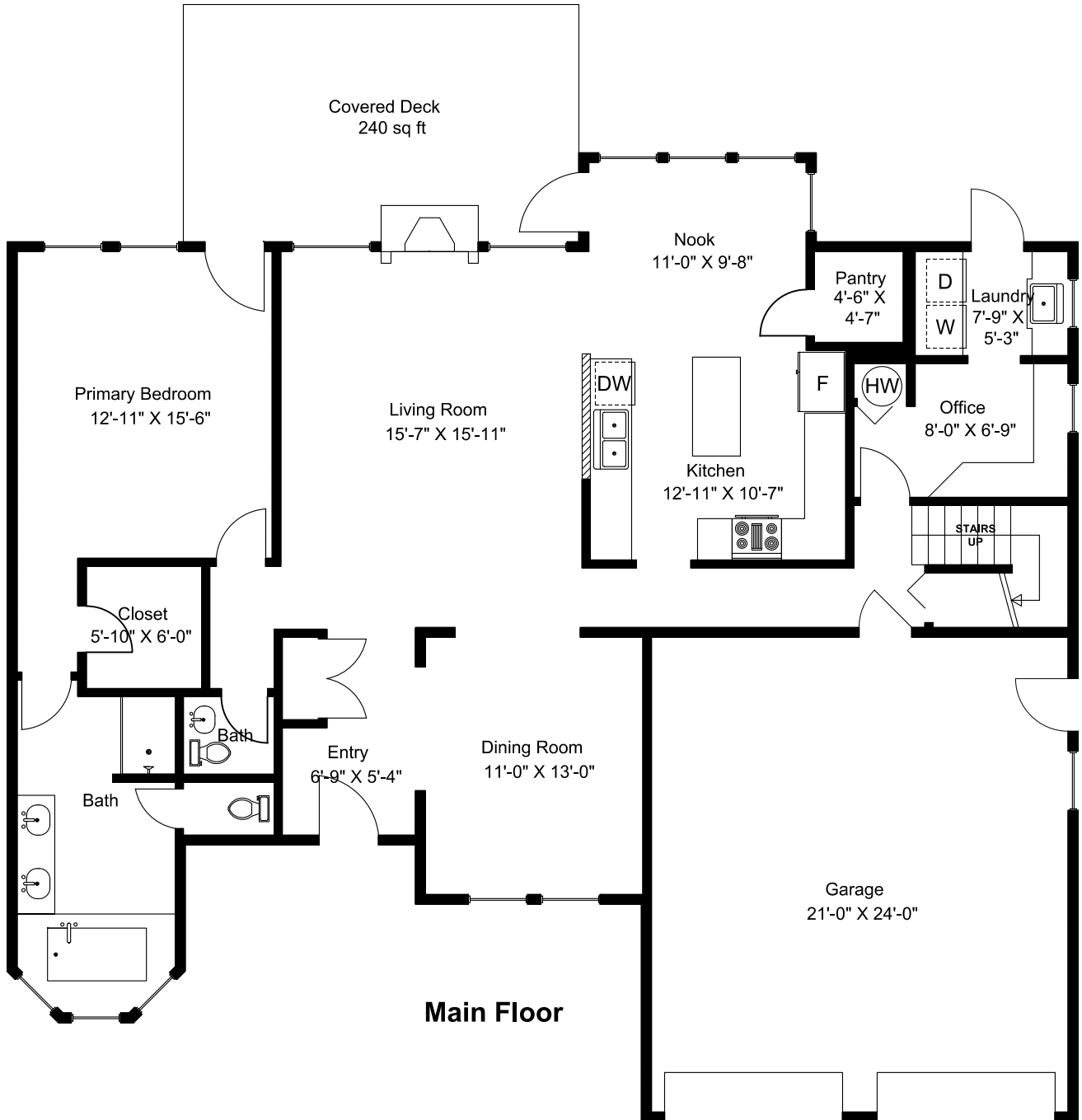


647 Temple Street



Main Floor = 1586 sq ft

Upper Floor = 686 sq ft

Total Area = 2272 sq ft

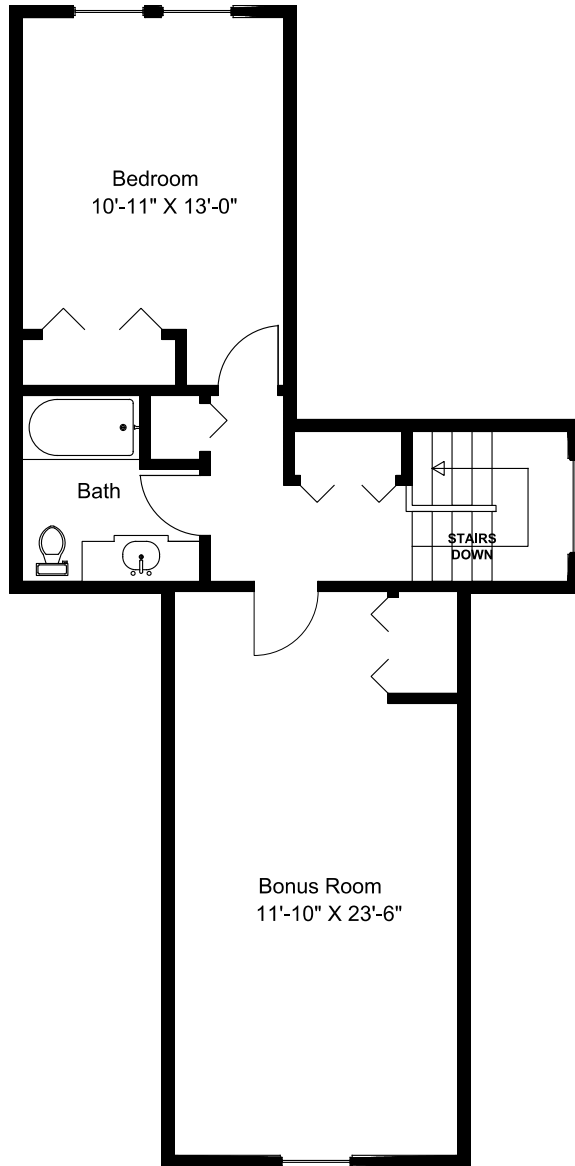
Deck = 240 sq ft

Garage = 534 sq ft

Dimensions as shown are approximate and should be verified

Prepared for the Exclusive use of
Susan Forrest
Royal LePage - Parkville
as measured on March 29, 2026

647 Temple Street



Upper Floor