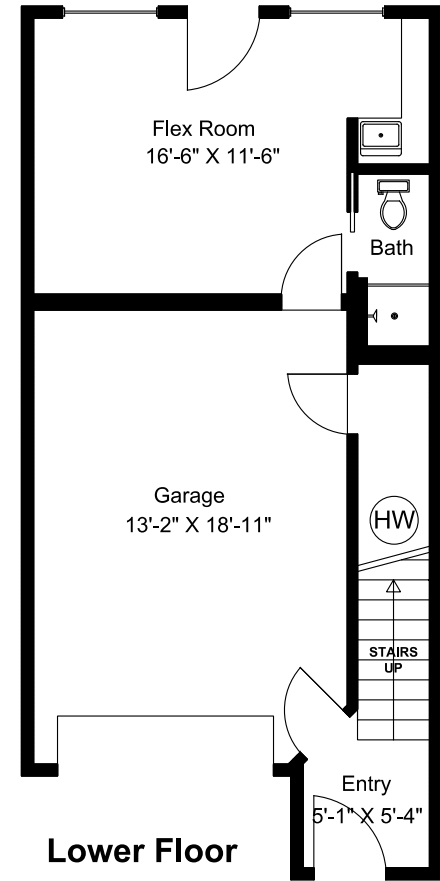
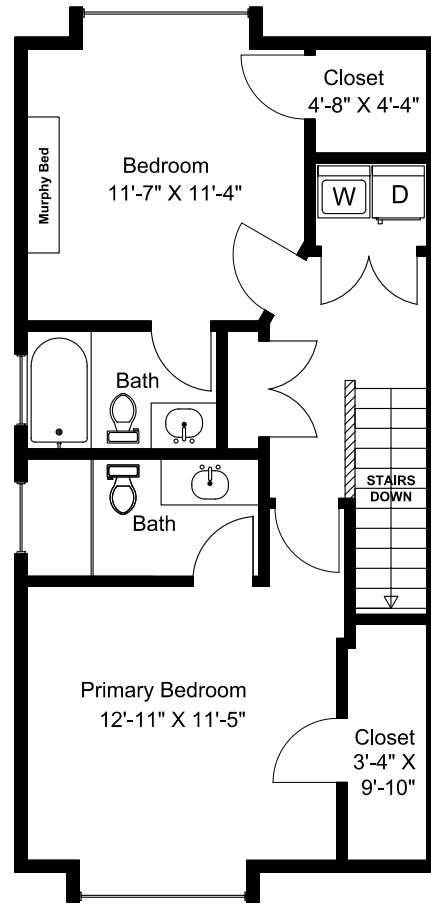
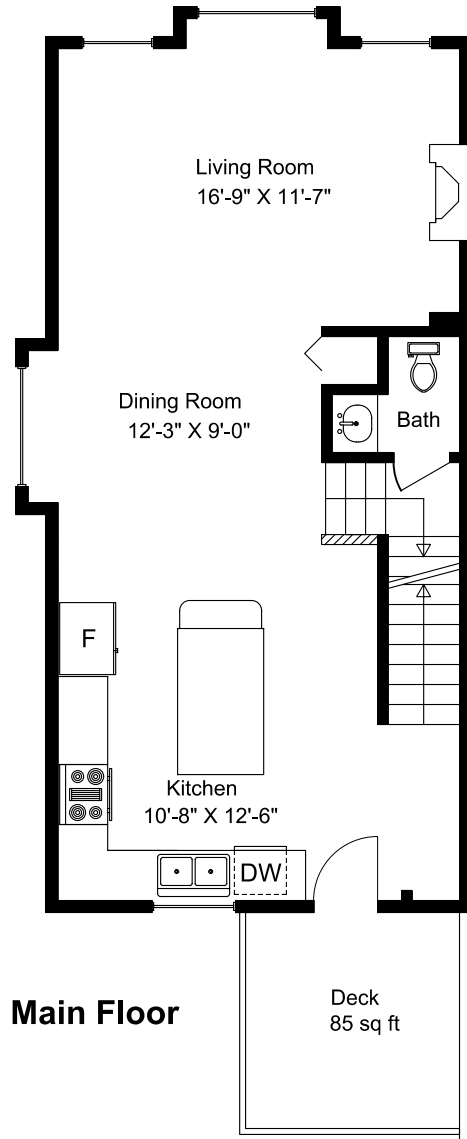


#100 - 253 Victoria Road



Main Floor = 659 sq ft
Upper Floor = 629 sq ft
Lower Floor = 300 sq ft
Total Area = 1588 sq ft
Garage = 288 sq ft
Deck = 85 sq ft

Dimensions as shown are approximate and should be verified

Prepared for the Exclusive use of
Susan Forrest
Royal LePage - Parksville
as measured on March 19, 2026