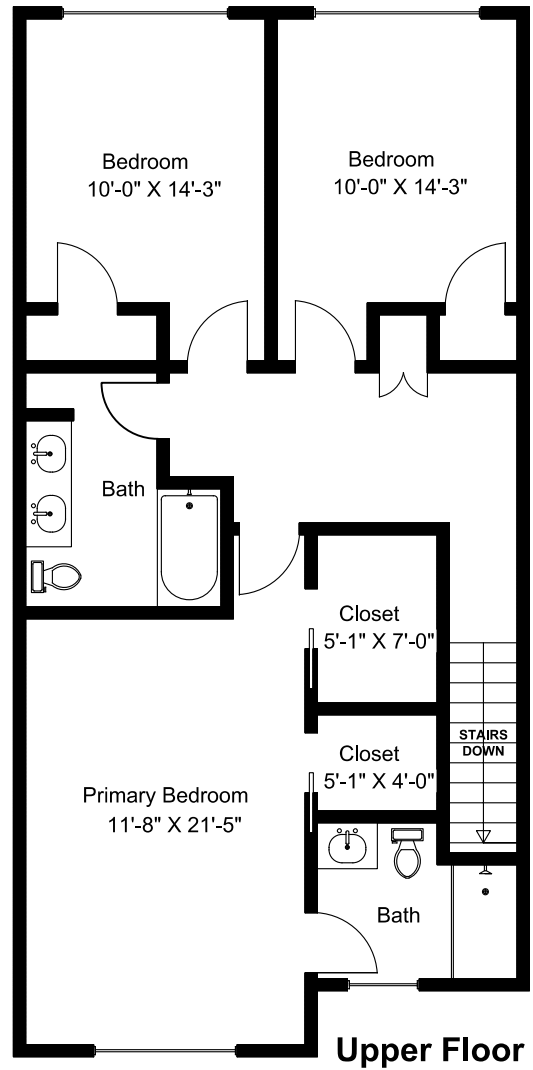
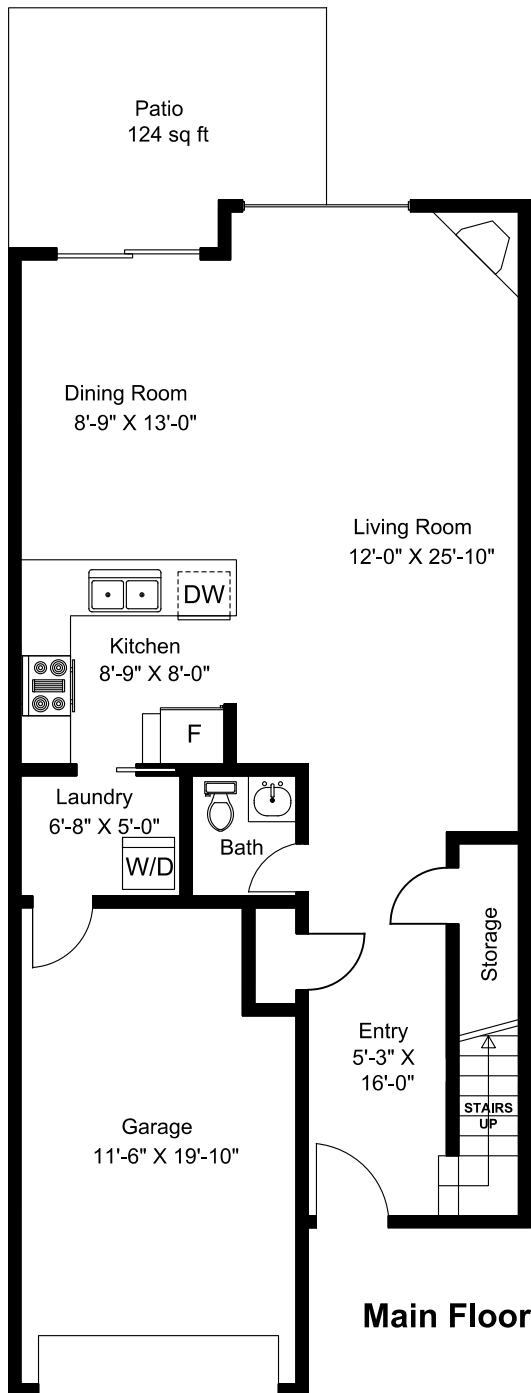


## #2 - 344 Hirst Avenue



Main Floor = 744 sq ft  
Upper Floor = 920 sq ft  
Total Area = 1664 sq ft  
Garage = 236 sq ft  
Patio = 124 sq ft

Dimensions as shown are approximate and should be verified

Prepared for the Exclusive use of  
Susan Forrest  
Royal LePage - Parksville  
from previous plans September 9, 2025