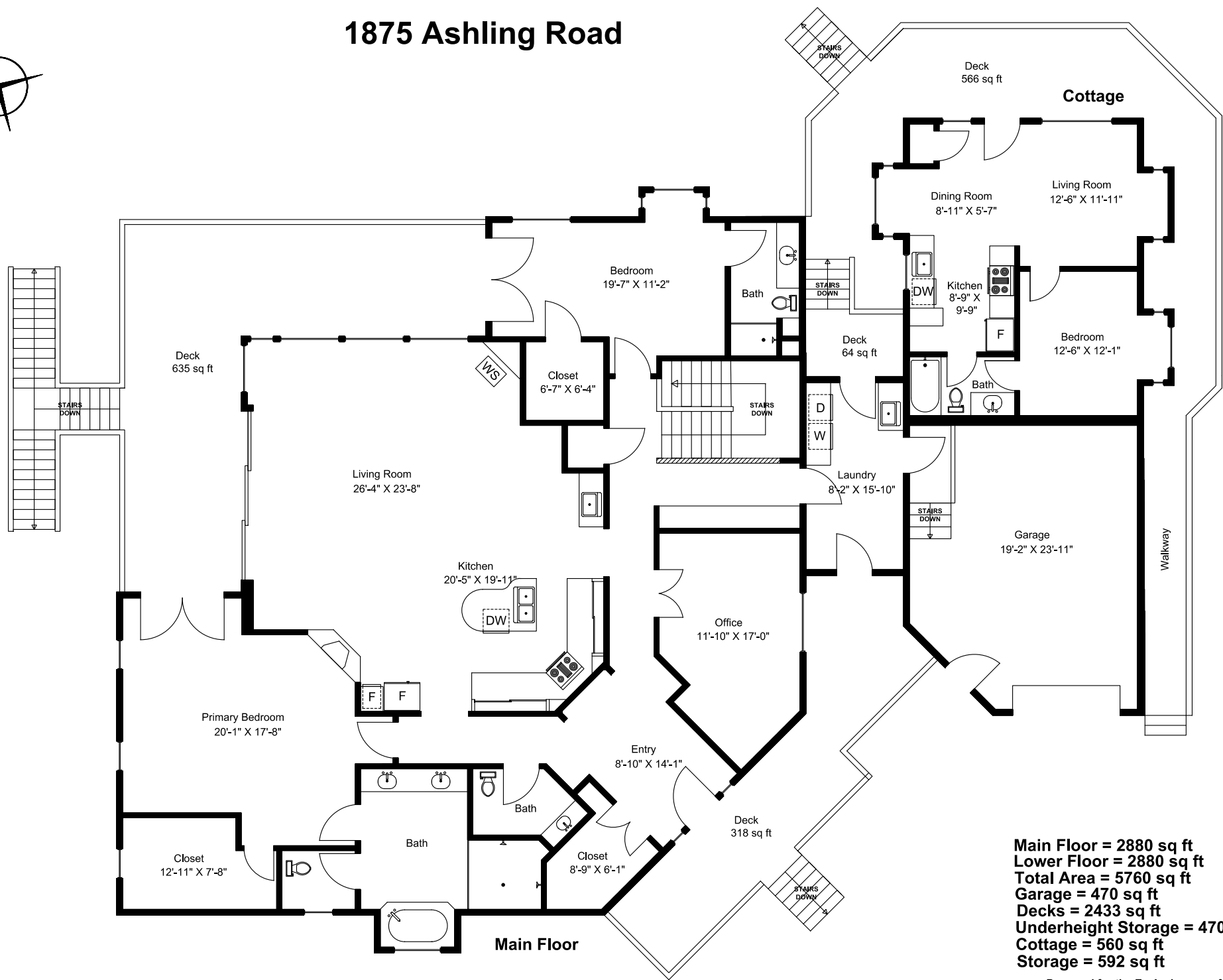


# 1875 Ashling Road

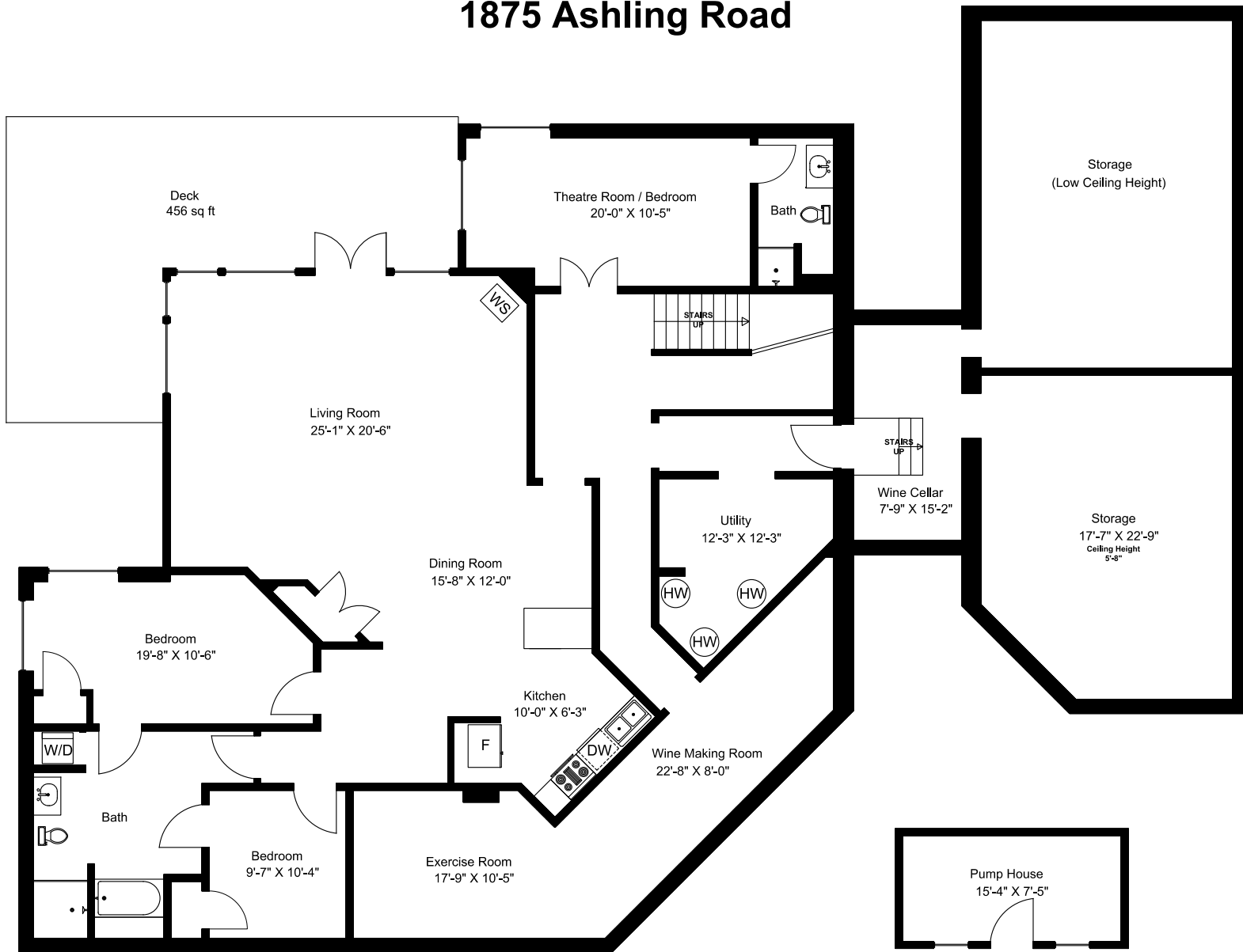


Main Floor = 2880 sq ft  
Lower Floor = 2880 sq ft  
Total Area = 5760 sq ft  
Garage = 470 sq ft  
Decks = 2433 sq ft  
Underheight Storage = 470 sq ft  
Cottage = 560 sq ft  
Storage = 592 sq ft

Prepared for the Exclusive use of  
Susan Forrest  
Royal LePage - Parksville  
as measured on August 21, 2025

Dimensions as shown are approximate and should be verified

# 1875 Ashling Road



Lower Floor

# 1875 Ashling Road

