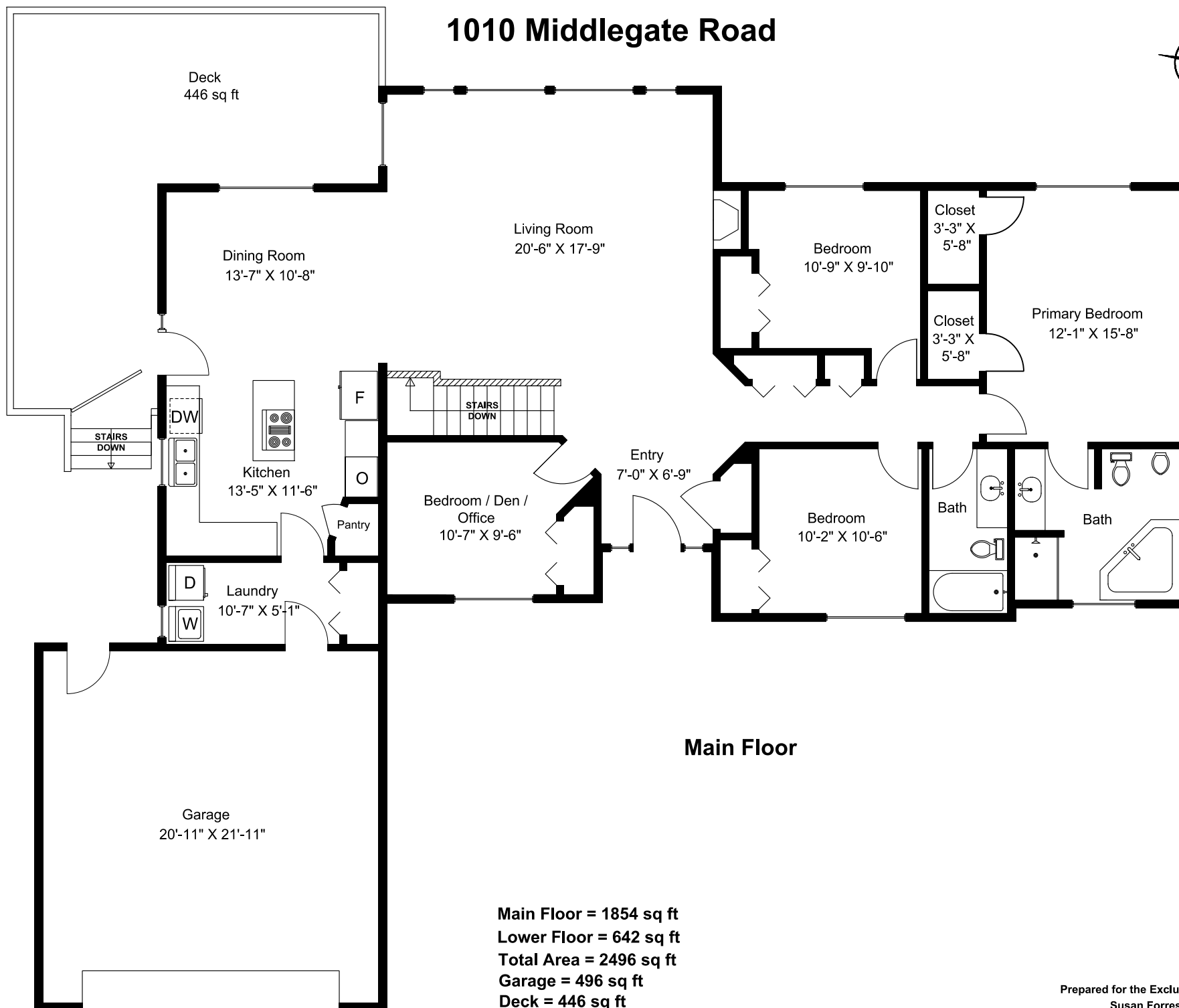
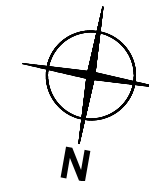


1010 Middlegate Road

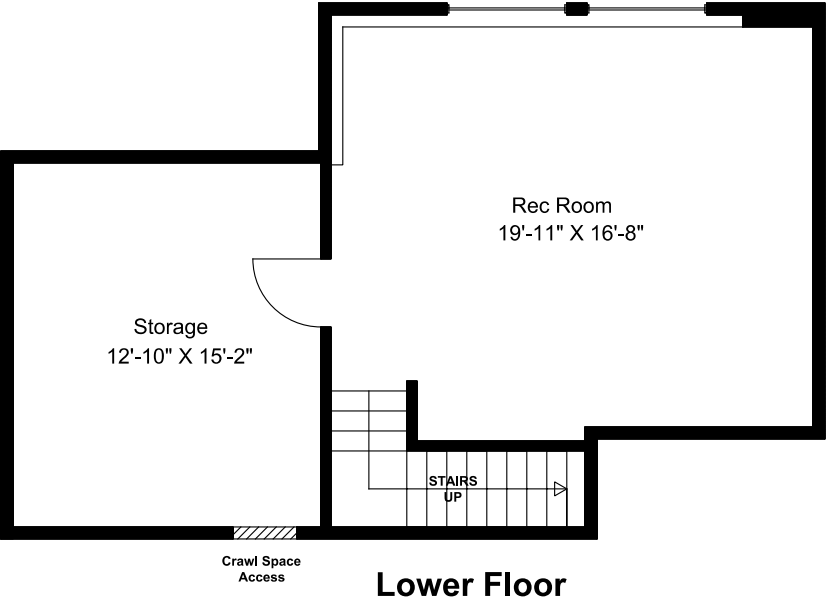


Main Floor = 1854 sq ft
Lower Floor = 642 sq ft
Total Area = 2496 sq ft
Garage = 496 sq ft
Deck = 446 sq ft

Dimensions as shown are approximate and should be verified

Prepared for the Exclusive use of
Susan Forrest
Royal LePage - Parksville
as measured on September 5, 2025

1010 Middlegate Road



Lower Floor