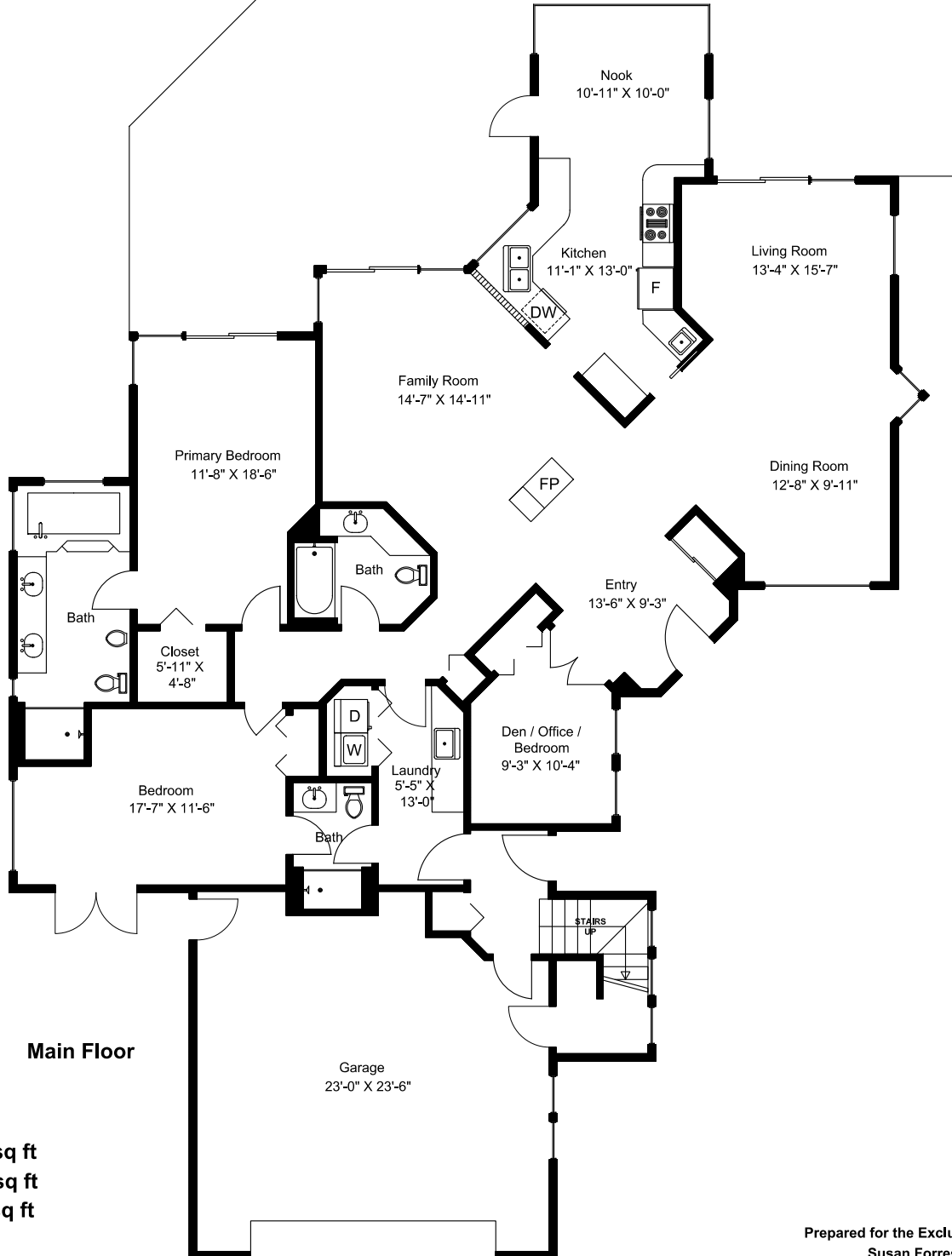


# 1545 Dorcas Point Road

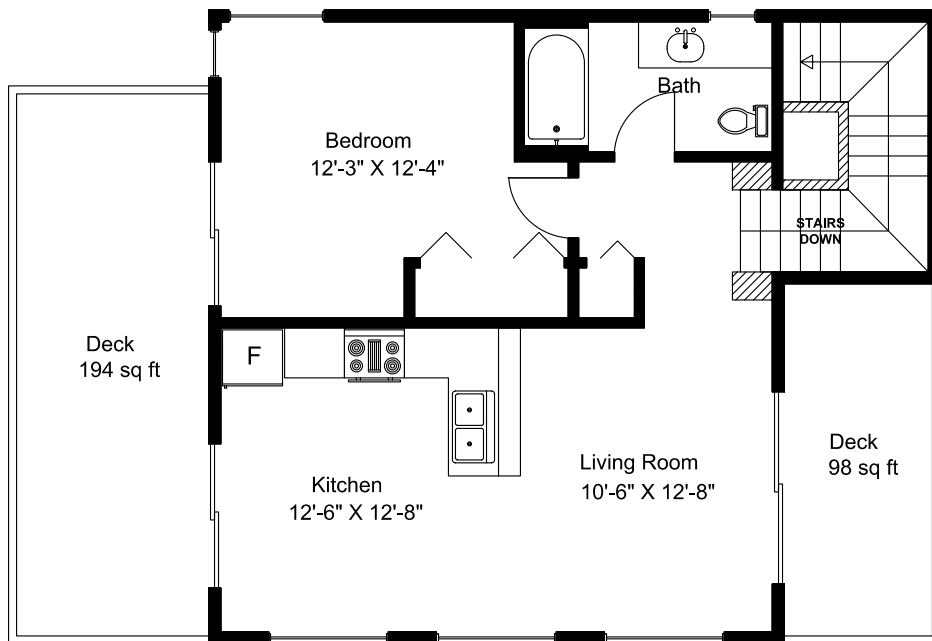


Main Floor = 2246 sq ft  
Upper Floor = 708 sq ft  
Total Area = 2954 sq ft  
Garage = 566 sq ft  
Decks = 1874 sq ft

Dimensions as shown are approximate and should be verified

Prepared for the Exclusive use of  
Susan Forrest  
Royal LePage - Parksville  
as measured on July 8, 2025

# 1545 Dorcas Point Road



Upper Floor