

## 3405 Ponderosa Way

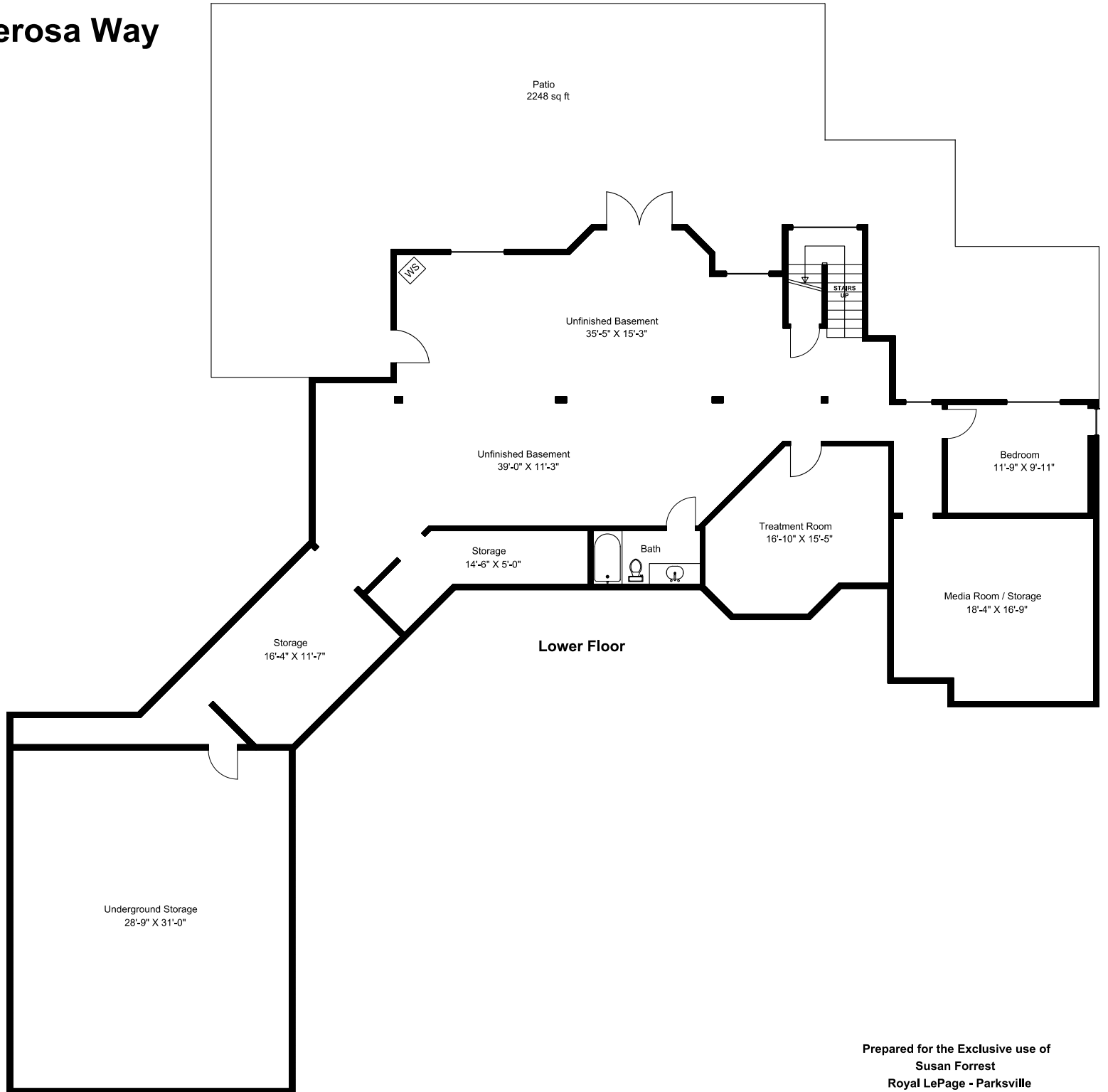
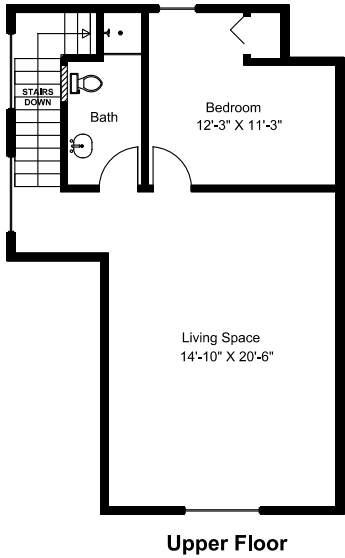
Shop = 1630 sq ft  
Space above Shop = 1208 sq ft  
Decks&Patio = 3098 sq ft  
Garage = 874 sq ft

Main Floor = 2470 sq ft  
Lower Floor = 2434 sq ft  
Upper Floor = 614 sq ft  
Total Area = 5518 sq ft

Dimensions as shown are approximate and should be verified

Prepared for the Exclusive use of  
Susan Forrest  
Royal LePage - Parkville  
as measured on September 27, 2024

# 3405 Ponderosa Way



# 3405 Ponderosa Way

