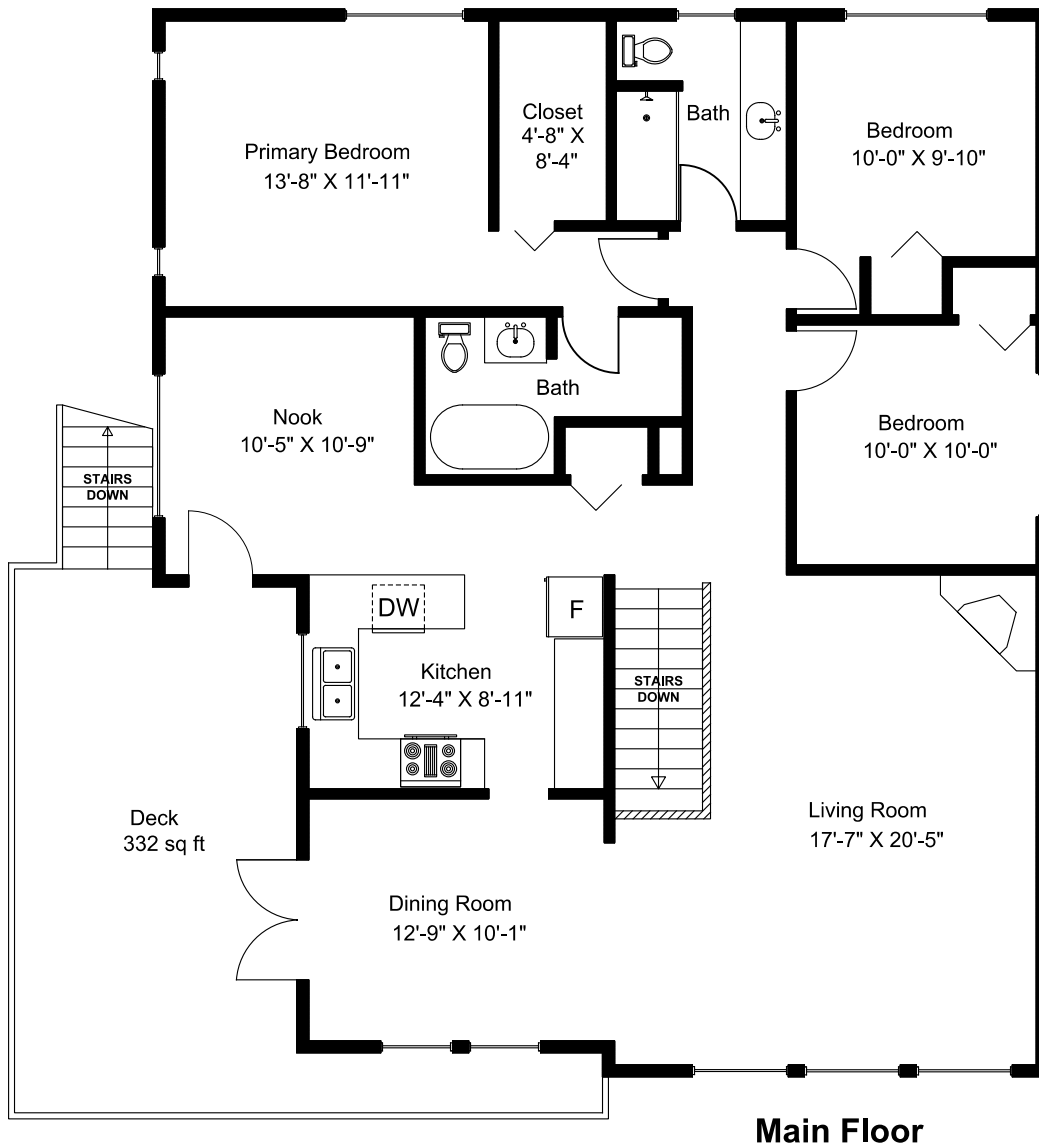
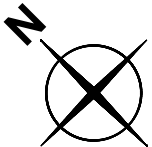


890 Dickinson Way



Main Floor



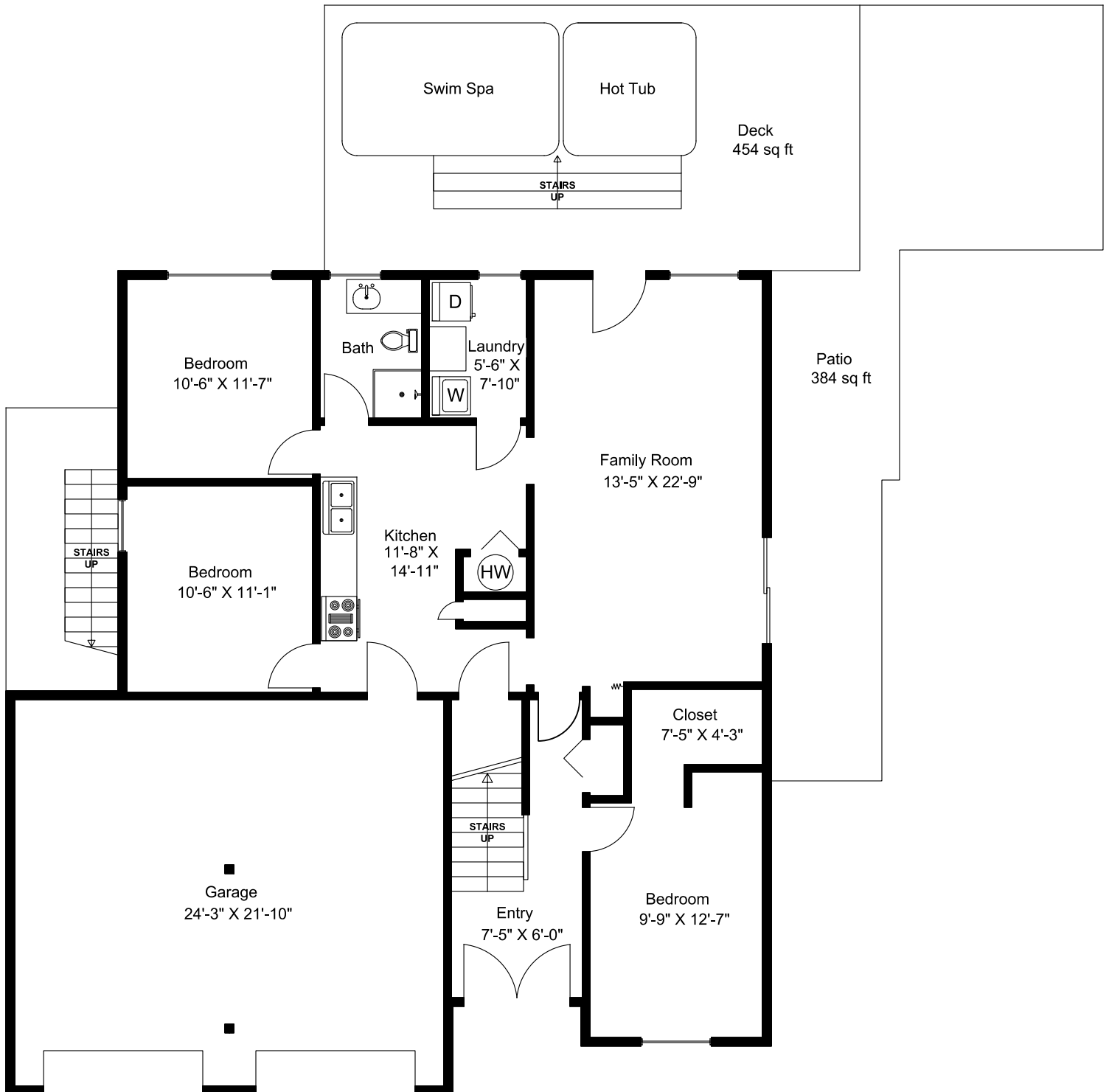
Dimensions as shown are approximate and should be verified

Main Floor = 1497 sq ft
Lower Floor = 1218 sq ft
Total Area = 2715 sq ft
Garage = 551 sq ft
Patios&Decks = 1062 sq ft

Prepared for the Exclusive use of
Susan Forrest
Royal LePage - Parkville
from previous plans July 19, 2023

This document was created and may not be altered or copied
without the written consent of Dave Atchison
DVA Solutions - 250-802-7398

890 Dickinson Way



Lower Floor

Prepared for the Exclusive use of
Susan Forrest
Royal LePage - Parksville
from previous plans July 19, 2023