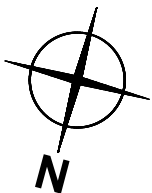
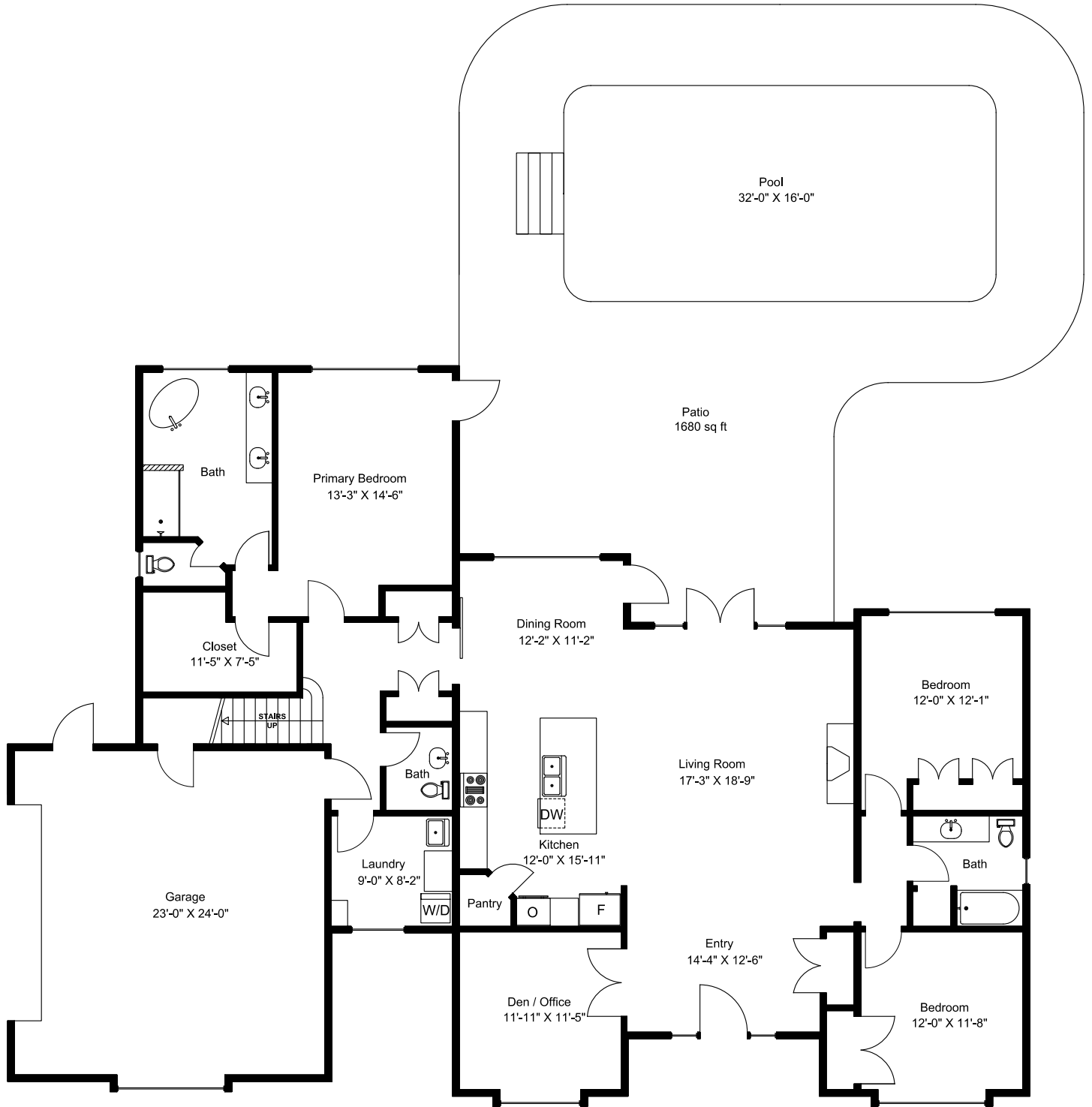


# 810 Wildgreen Way



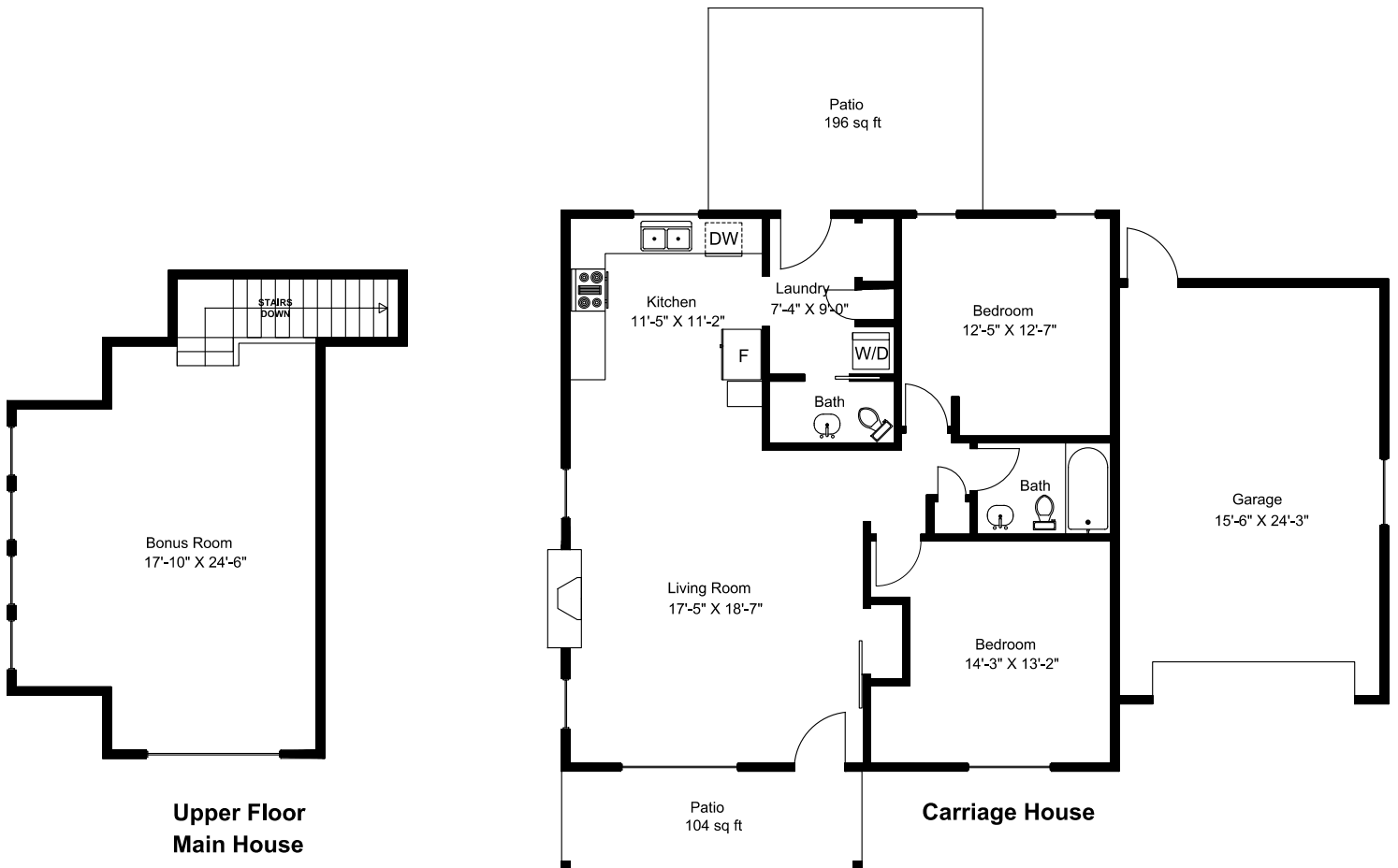
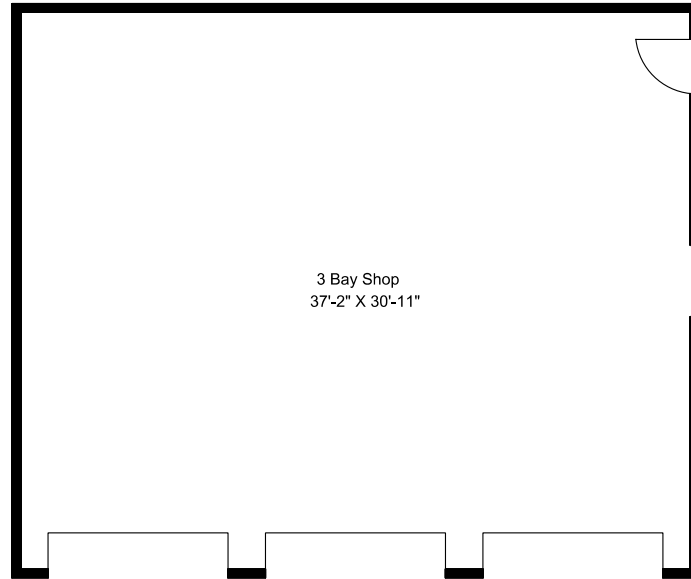
**Main Floor = 2321 sq ft**  
**Upper Floor = 487 sq ft**  
**Total Area = 2808 sq ft**  
**Patio Areas = 1980 sq ft**  
**Garage = 586 sq ft**  
**3 Bay Shop = 1218 sq ft**  
**Carriage House = 1104 sq ft**

Prepared for the Exclusive use of  
Susan Forrest  
Royal LePage - Parkville  
as measured on May 13, 2023

This document was created and may not be altered or copied  
without the written consent of Dave Atchison  
DVA Solutions - 250-802-7398

Dimensions as shown are approximate and should be verified

# 810 Wildgreen Way



Upper Floor  
Main House

Prepared for the Exclusive use of  
Susan Forrest  
Royal LePage - Parksville  
as measured on May 13, 2023