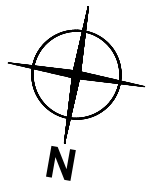
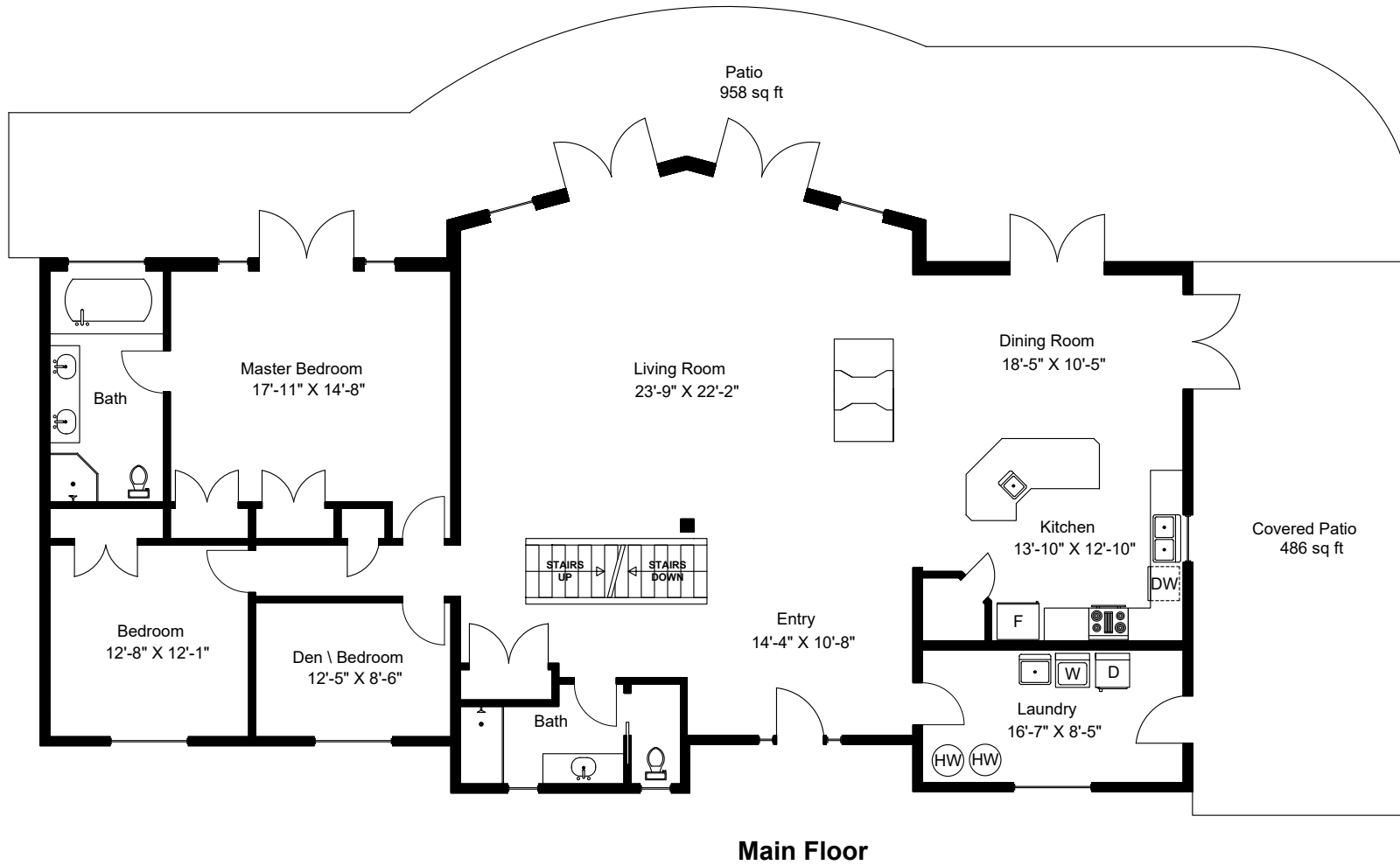


955 View Road



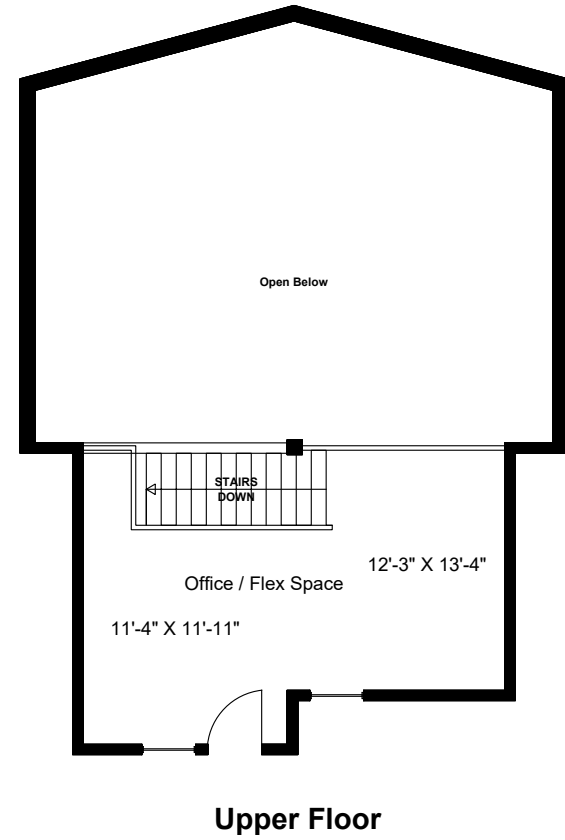
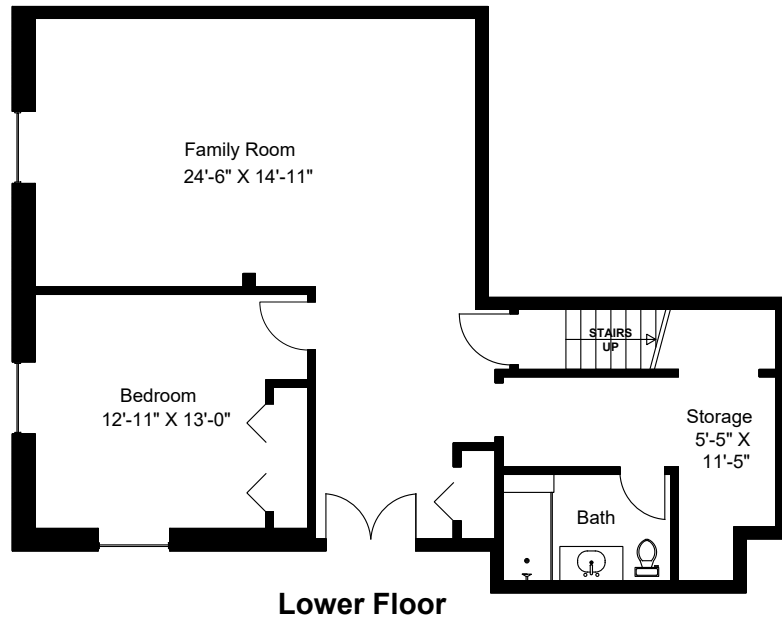
Dimensions as shown are approximate and should be verified

Main Floor = 2495 sq ft
Lower Floor = 1065 sq ft
Upper Floor = 390 sq ft
Total Area = 3950 sq ft
Patio = 1444 sq ft

Prepared for the Exclusive use of
Susan Forrest
Royal LePage - Parkville
as measured on May 11, 2021

Measurements and Drawing by DVA Solutions
Dave Atchison - 250-802-7398

955 View Road



Prepared for the Exclusive use of
Susan Forrest
Royal LePage - Parkville
as measured on May 11, 2021