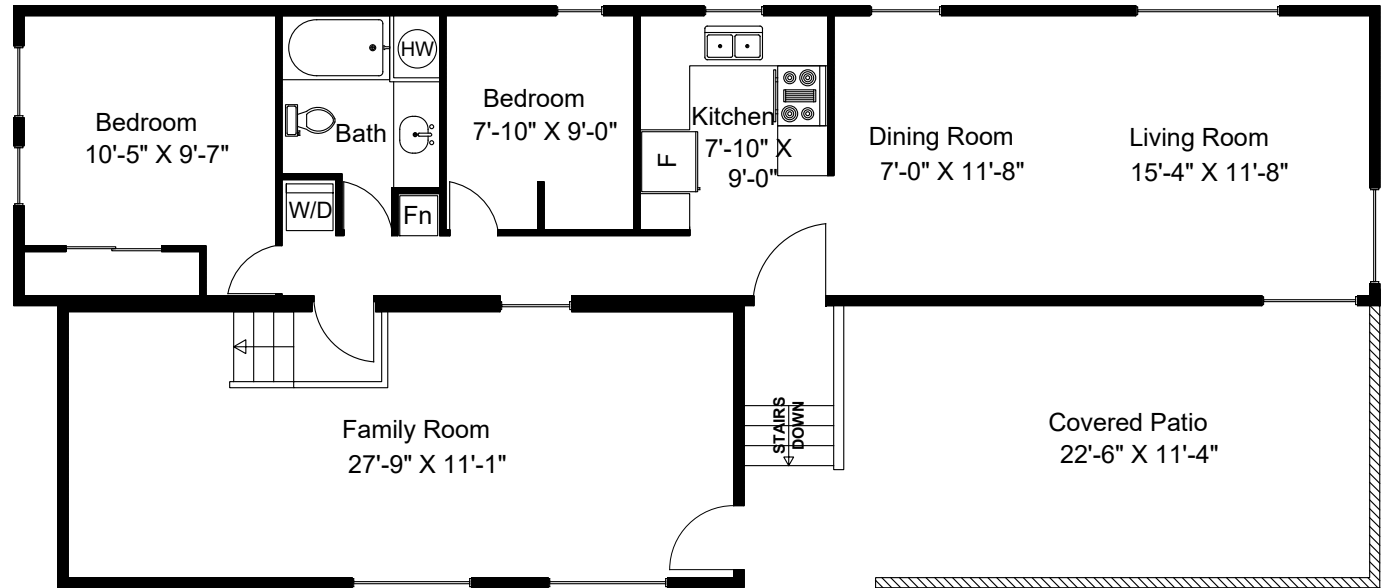
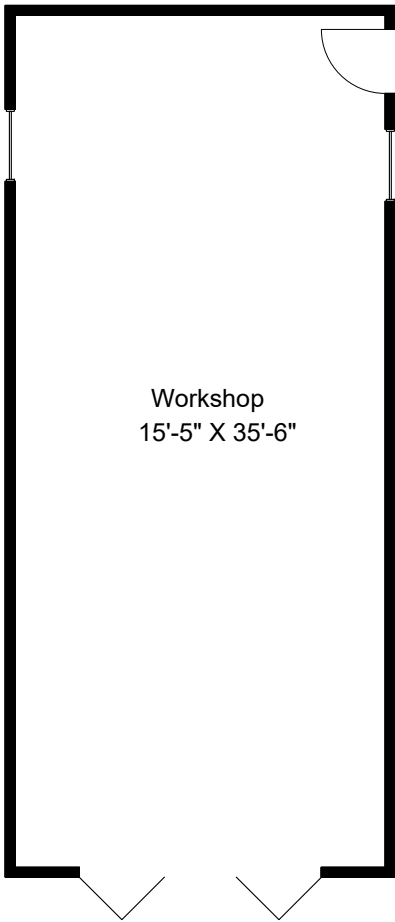
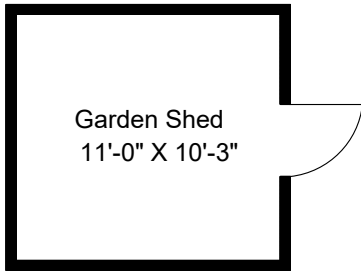
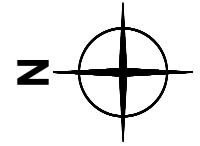


733 Barclay Crescent



Main Floor

Main Floor = 1046 sq ft
Covered Patio = 312 sq ft
Shop = 590 sq ft
Garden Shed = 131 sq ft

Prepared for the Exclusive use of
Susan Forrest
Royal LePage - Parksville
as measured on April 14, 2021

Dimensions as shown are approximate and should be verified