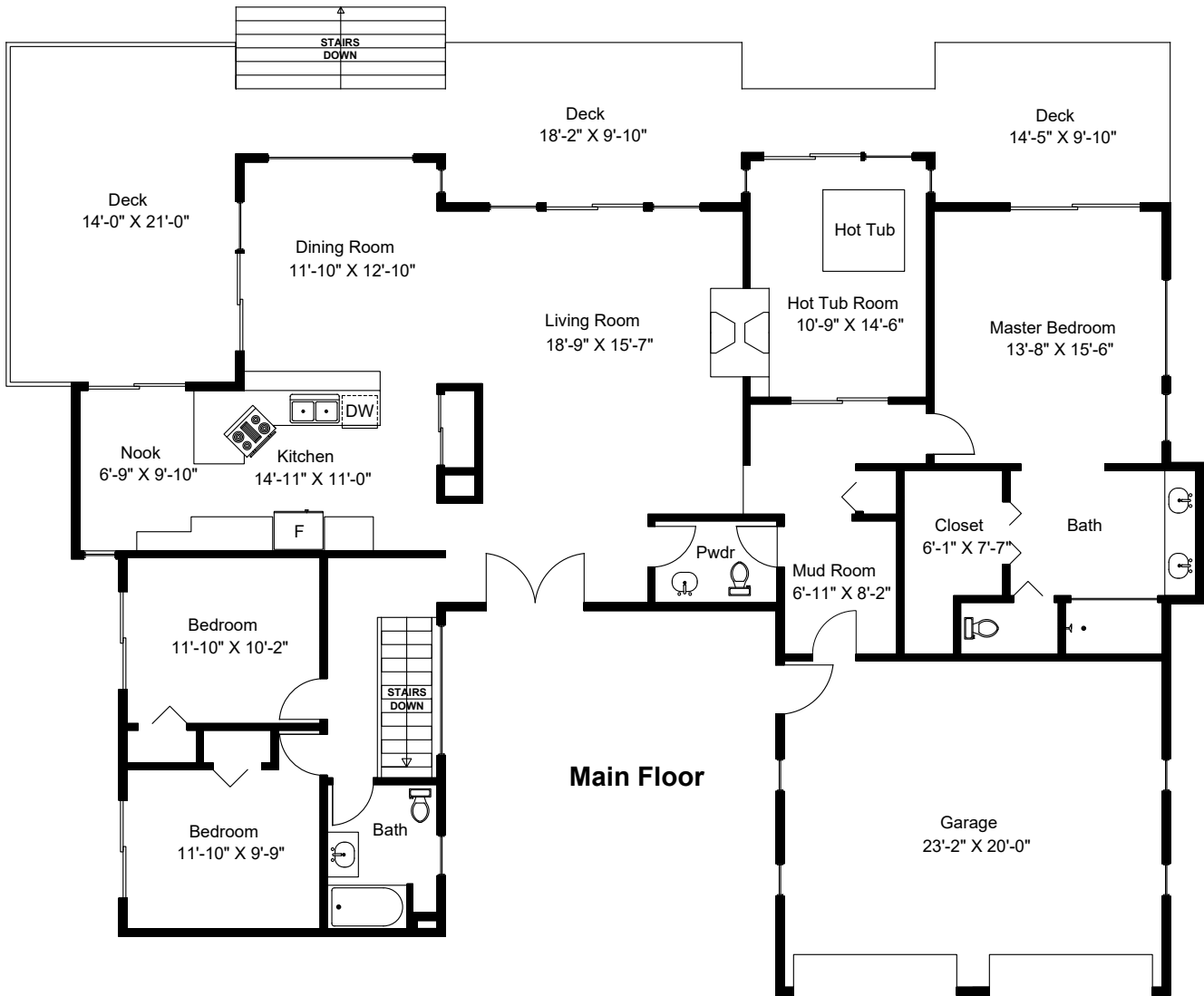
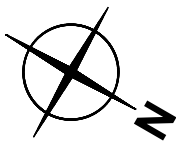


1425 Dorcas Point Road



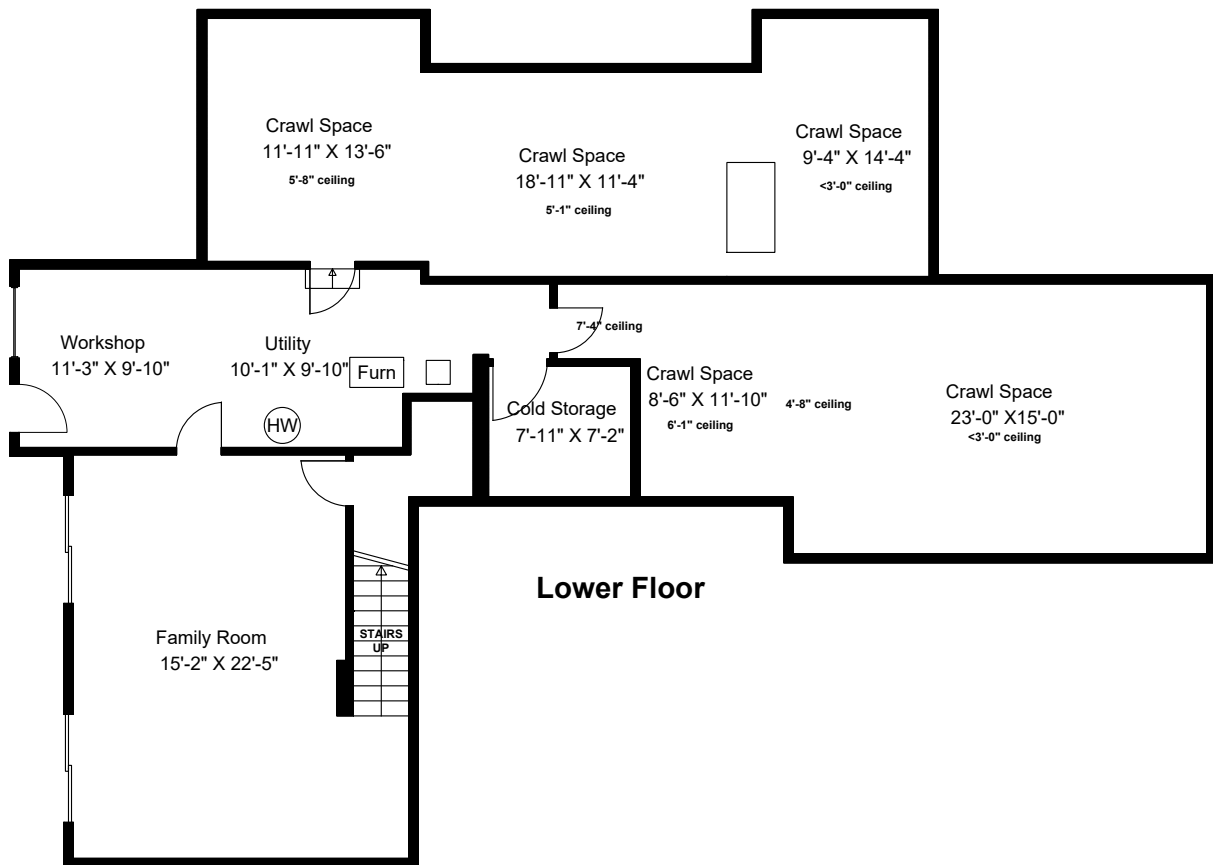
Main Floor



Main Floor = 2132 sq ft
Lower Floor = 832 sq ft
Total Area = 2964 sq ft
Crawl Space = 1052 sq ft
Deck = 777 sq ft

Prepared for the Exclusive use of
 Susan Forrest
 Royal LePage - Parkville
 as measured on May 14, 2019

1425 Dorcas Point Road



Prepared for the Exclusive use of
Susan Forrest
Royal LePage - Parkville
as measured on May 14, 2019