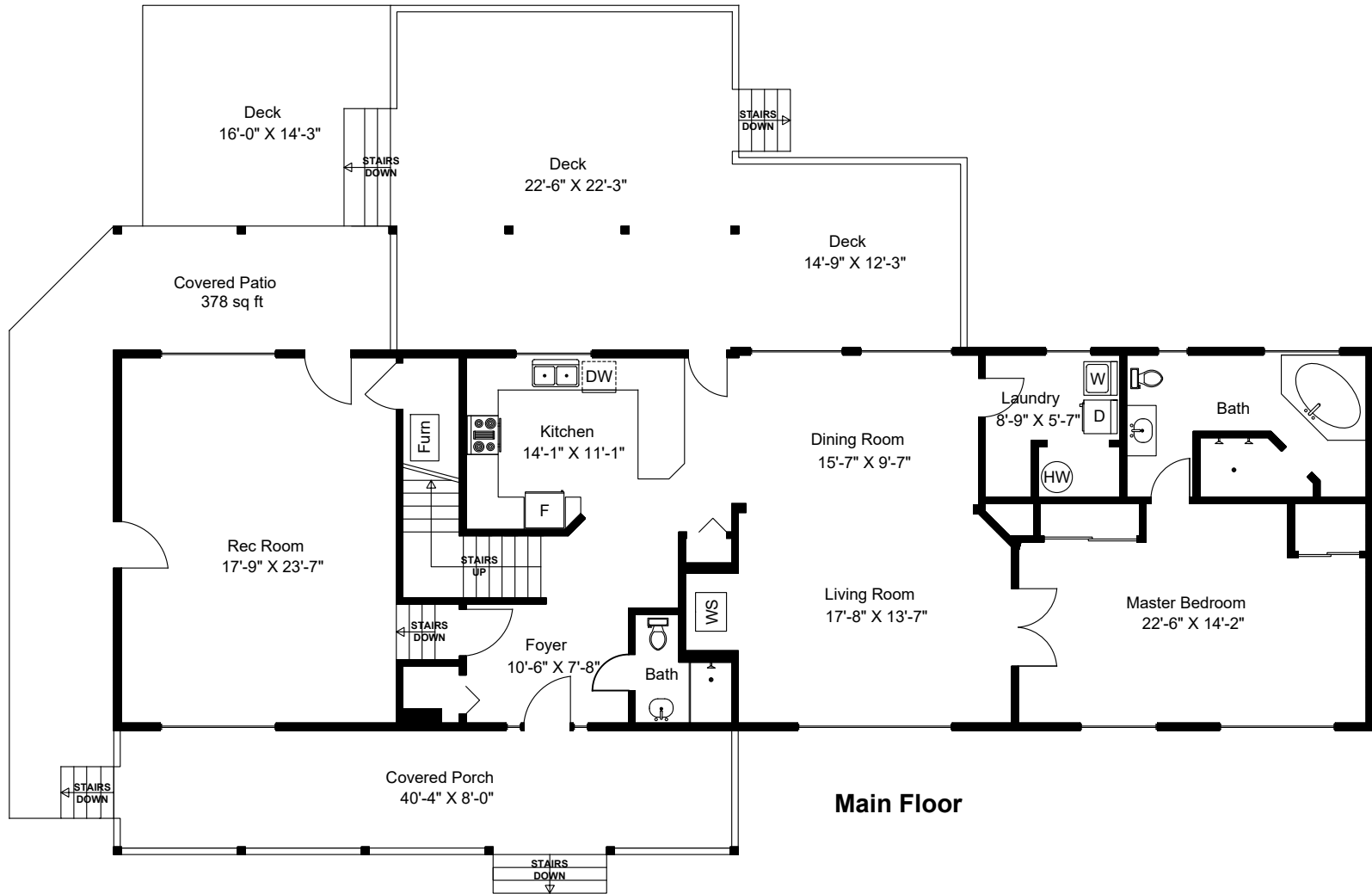
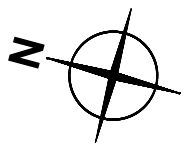


275 Kendon Drive



Main Floor



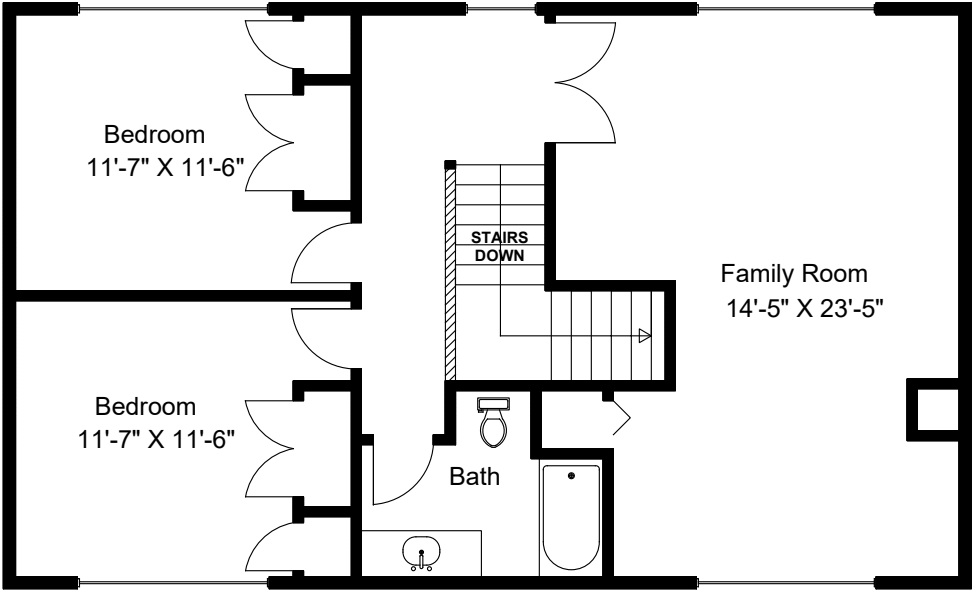
Dimensions as shown are approximate and should be verified

Main Floor = 2026 sq ft
Upper Floor = 996 sq ft
Total Area = 3022 sq ft
Deck, Porch, Patio = 1564 sq ft
Outbuildings = 3763 sq ft

Prepared for the Exclusive use of
 Susan Forrest
 Royal LePage - Parkville
 as measured on July 20, 2018

Measurements and Drawing by DVA Solutions
 Dave Atchison - 250-802-7398

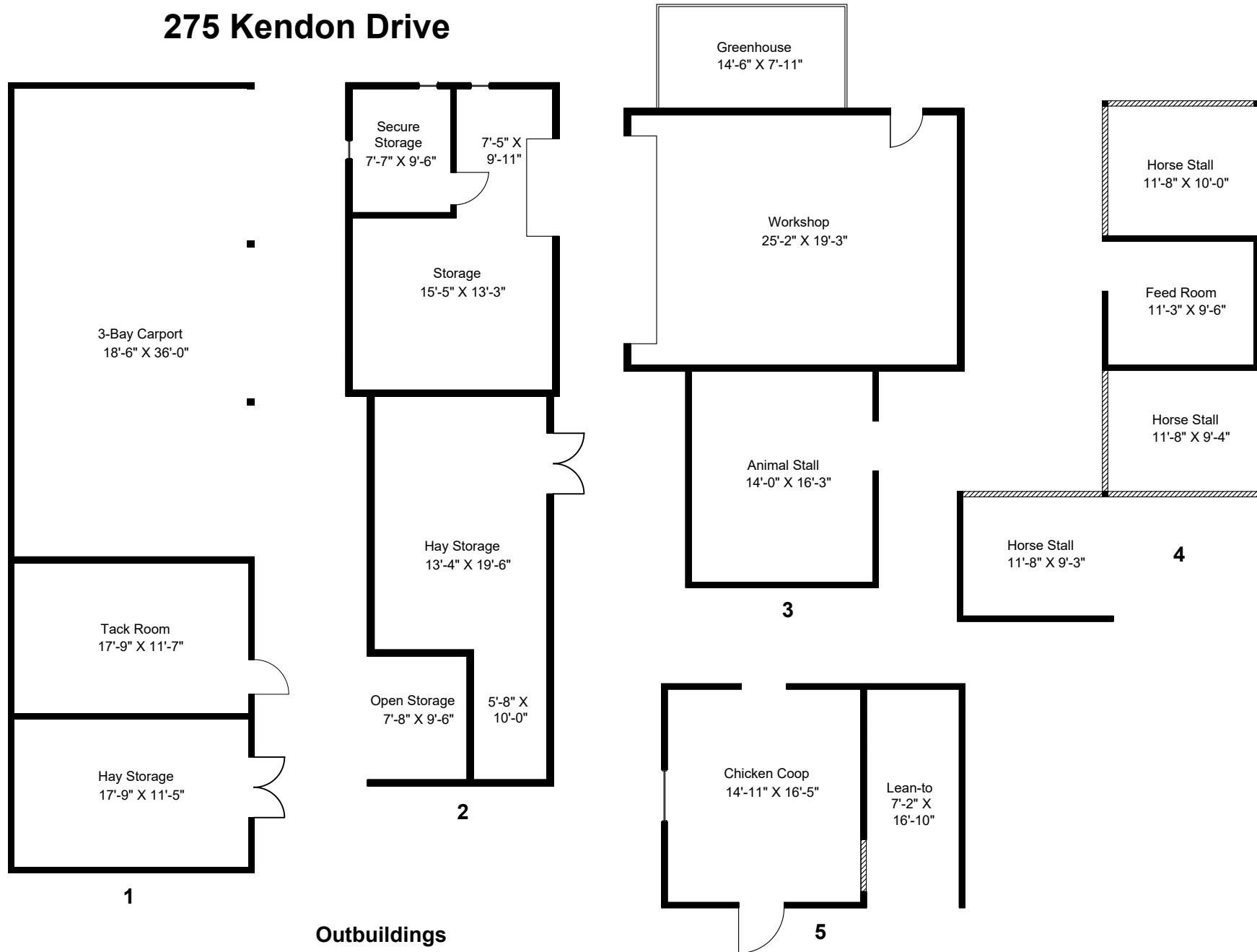
275 Kendon Drive



Upper Floor

Prepared for the Exclusive use of
Susan Forrest
Royal LePage - Parkville
as measured on July 20, 2018

275 Kendon Drive



Outbuildings

- 1 - 3 Bay Carport (690 sq ft), Tack Room (236 sq ft), Hay Storage (225 sq ft)
- 2 - Secure Storage (89 sq ft), Hay Storage (661 sq ft), Open Storage (77 sq ft)
- 3 - Green House (117 sq ft), Workshop (530 sq ft), Animal Stall (247 sq ft)
- 4 - Stable (488 sq ft)
- 5 - Chicken Coop (272 sq ft), Lean-to (131 sq ft)

Prepared for the Exclusive use of
 Susan Forrest
 Royal LePage - Parkville
 as measured on July 20, 2018